

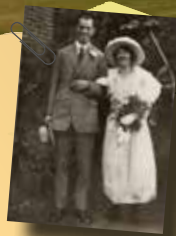
visit **whitecliffscountry**

DOVER • DEAL • SANDWICH

FREE VISITOR GUIDE 2014



Jack and Agnes got married below the White Cliffs of Dover in 1914 just before the outbreak of World War One...



Join them on their 100th Anniversary journey through the district and discover the hidden gems of White Cliffs Country.





making
memories

The White Cliffs of Dover

More than just a view. A
place to relax, walk and
discover.

01304 207326
nationaltrust.org.uk/white-cliffs-dover

National Trust



Photography throughout this publication has been supplied by:
Dover District Council;
Paul Wells;
White Cliffs Countryside Partnership;
Peter Smith Photography;
National Trust (credited against individual photographs)
and individual advertisers.

This publication was designed and produced by
Dover District Council, Creative Design and Tourism Departments
and printed by Adams Printers, Dover, on FSC paper.

For further information:
Dover Visitor Information Centre
Dover Museum, Market Square, Dover, Kent
CT16 1PB
Tel: 01304 201066
Email: tic@doveruk.com
Web: www.whitecliffscountry.org.uk

CONTENTS...	
Welcome	5
White Cliffs Country and the First World War 48 Hours	9
Dover	11
Deal	13
Sandwich	15
Castles and Forts	17
World War Two and more	19
Gardens, Parks & Wildlife	21
Get Active	23
Walks and Cycle Rides	27
Working Heritage	28
What's On in 2014	30
Places to Go	34
Places to Eat	38
Places to Stay	43
Dover Town Map	45
Deal Town Map	53
Sandwich Town Map	54
How to get here	55
Visitor Information Centres	56

whitecliffscountry

Our fictional First World War couple welcome you to their personal anniversary tour...

Jack is in the Royal Navy Volunteer Reserve Anti-Aircraft Corps Dover.

This Corps performed a valuable task watching the skies over Dover night after night for enemy Zeppelins and aircraft.

Agnes gave up her job in the Pay Office on marrying Jack in March 1914. In October, when Jack joined the RNVR she got a job as a clippie on the Dover trams. She felt herself lucky as Jack was in Dover and not going to the front.



Photographs: Main picture: Iconic White Cliffs at St Margarets Bay. Left to right: White Cliffs Country Greeters; pilgrims badge depicting Thomas Becket; the wonderful Stone Hall at Dover Town Hall; a King's welcome at Dover Castle Great Tower



WELCOME...

Great Britain and especially Dover, as the 'Gateway to Britain', has been praised for its warm welcome and the legacy of the 2012 Olympic volunteer greeters is now recognised across the world. We aim to reflect that when you arrive in White Cliffs Country. Whether catching a first glimpse of the sea from rail or road or if your first sight of the district is the mighty chalk cliff-face as your ferry reaches Dover harbour - we want to extend that welcome.

The neighbouring towns are no different. The motto of Deal is "Adjuvate Advenas" or "Befriend the Stranger" and the town also has Welcome Walkers status. Along the coast, Sandwich has been offering a safe haven to refugees and visitors since the Middle Ages.

Dover Town Hall was once used as a pilgrim's hostel - welcoming travellers from far and wide - try and catch one of the tours to see and hear more about it.

Dover Castle sitting high on our white cliffs is where Henry II welcomed his guests from abroad, dining and dining them in the magnificent Keep, before they travelled to the capital. We can't promise you quite such regal splendour but there are so many fascinating places to visit we are sure you will forgive us!

Walking, sailing, cycling, sightseeing - you can do it all in White Cliffs Country. Come for a week or a day, there's a packed programme planned for 2014.

Have a great stay!

BIENVENUE

La Grande-Bretagne, et en particulier Douvres dans son rôle de « Porte du Royaume-Uni », ont été louées pour leur accueil chaleureux et l'héritage des agents d'organisation des Jeux Olympiques de 2012 est désormais reconnu à travers le monde. Notre veillons à ce que cela se reflète lorsque vous arrivez dans le Pays des falaises blanches. Par train ou par route, avec vue sur la mer, ou en ferry dans le port de Douvres avec vue sur les immenses falaises de craie blanche, nous vous accueillons à bras ouvert.

Les villes voisines ne sont pas différentes. La devise de Deal est « Adjuvate Advenas », ce qui signifie « L'étranger est notre ami », et la ville arbore également le pavillon du réseau « Welcome Walkers ». Sur le littoral, Sandwich est un véritable paradis pour les réfugiés et les visiteurs depuis le Moyen-âge.

La mairie de Douvres était autrefois utilisée comme hôtel pour les pèlerins, accueillant

les voyageurs de tous horizons. N'hésitez pas à emprunter les navettes du circuit touristique pour en savoir plus.

Le château de Douvres, sur les hauteurs de nos falaises blanches, est le lieu où Henri II accueillait ses invités étrangers, festoyant avec eux dans le magnifique donjon, avant de se rendre à la capitale. Nous ne pouvons pas vous promettre un banquet royal mais les lieux fascinants sont si nombreux à visiter que nous sommes certains que vous nous pardonnerez !

Randonnée, plaisance, cyclisme, visite, le Pays des falaises blanches vous attend. Pour une semaine ou une journée, découvrez le programme de 2014.

Passez un bon séjour !



WILKOMMEN

Großbritannien und vor allem Dover, als das „Eingangstor nach Britannien“, sind für ihren herzlichen Empfang und das Vermächtnis der freiwilligen „Greeters“ bei den Olympischen Spielen 2012 gelobt worden, die nun die ganze Welt kennt. Genau das versuchen wir zu vermitteln, wenn Sie in White Cliffs Country ankommen. Egal, ob Sie einen ersten Blick auf das Meer aus dem Auto oder dem Fenster Ihres Zuges erhaschen, oder ob Ihr erster Eindruck der Gegend von dem Blick auf den mächtigen Kreidefelsen entsteht, sobald Sie den Hafen von Dover per Fähre erreichen - diesen Willkommensgruß der Natur möchten wir persönlich unterstreichen.

In den benachbarten Ortschaften ist es nicht anders. Unter dem Motto „Adjuvate Advenas“ oder „Befriend the Stranger“ (z. Dt. freunde dich mich dem Besucher an) heißen wir unsere Gäste in dem Städtchen willkommen, das außerdem „Walkers are Welcome“-Status als besonders Fußgängerfreundliche Stadt besitzt. Entlang der Küste bietet Sandwich seit dem Mittelalter einen sicheren Zufluchtsort für Abenteurer und Besucher.

Das Rathaus von Dover war einst eine Pilgerherberge, in der Ankömmlinge von nah und fern herzlich empfangen wurden. Machen Sie sich ein Bild und nehmen Sie eine der Touren in Anspruch, um mehr darüber zu erfahren.

Das Schloss von Dover, das sich hoch oben auf einer weißen Klippe befindet, ist der Ort, an dem Heinrich der II. von England seine aus fernen Landen angereisten Gäste begrüßte, um mit ihnen zu dinieren und ihnen Wein auszuschenken, bevor sie in die Hauptstadt weiter zogen. Auch wenn wir Ihnen solch einen königlichen Empfang nicht bieten können, sind wir sicher, dass Sie uns dies nicht nachtragen werden, wenn Sie die vielen faszinierenden Orte besuchen!

Wandern, Segeln, Fahrradfahren oder Sightseeing - in White Cliffs Country ist nichts unmöglich. Sie haben die Wahl zwischen einer Woche oder auch nur einem Tag, für das gesamte Kalenderjahr 2014 gibt es ein volles Programm.

Genießen Sie Ihren Aufenthalt!



In late July 1914 12 'Tribal' class destroyers arrived in Dover. The Dover Patrol became one of the most important Royal Navy commands of the First World War. Jack and Agnes went up onto the cliffs to see the fleet.



Photographs:
Main picture: Royal Marines, Deal.
Left to right: All Clear Siren;
Dover Siren, Lizzie; Dover Tram staff.

White Cliffs Country and the First World War...

To Dover goes the dubious honour of being the place where the first bomb fell on British soil. Around midday on December 24th 1914 a German plane was spotted over the town. Its pilot Lieutenant von Prondzynski leaned over the side of his plane and saw Dover Castle and the great naval harbour some 5,000 feet below him. He lifted his bomb in both hands as his knees held his "joy stick", heaving the bomb over the side of the plane he let it fall.

The bomb dropped towards the Castle but Lt. Prondzynski was about 400 yards short of his target, no mean achievement in days when bomb-aiming instruments were unknown. The tiny bomb landed in the garden adjoining St James' Rectory and made a crater about four or five feet deep. The blast smashed some

windows in the Rectory and knocked the gardener, Mr James Banks, out of a tree he was pruning.

A moonlight raid on Dover at 1 a.m. on 23rd January 1916 saw nine bombs dropped. One fell on the roof of the Red Lion Inn in St James' Street, killing one man and injuring two others. Another fell on the malthouse of the Phoenix Brewery and caused a fire which was soon extinguished. Three children were injured at Golden Cross Cottages.

By the end of the First World War, 184 bombs dropped from enemy aircraft and 23 shells fired by enemy ships had fallen on the town. There were 113 air-raids in all, 23 people were killed and 71 injured.



It was Christmas Eve 1914 and the first bomb to fall on British soil fell in Dover. Jack had two days leave and the weather was bright and sunny so he took Agnes on a roller-coaster trip around the district to cheer her up.



Photographs: Main picture: Dover Castle fun. Left to right: white cliffs up close; great places to eat and relax; River tour wildlife; Secret Gardens discovered

48 HOURS...

48 hours is not enough time to experience White Cliffs Country, but if that's all you have then try some of our suggestions!

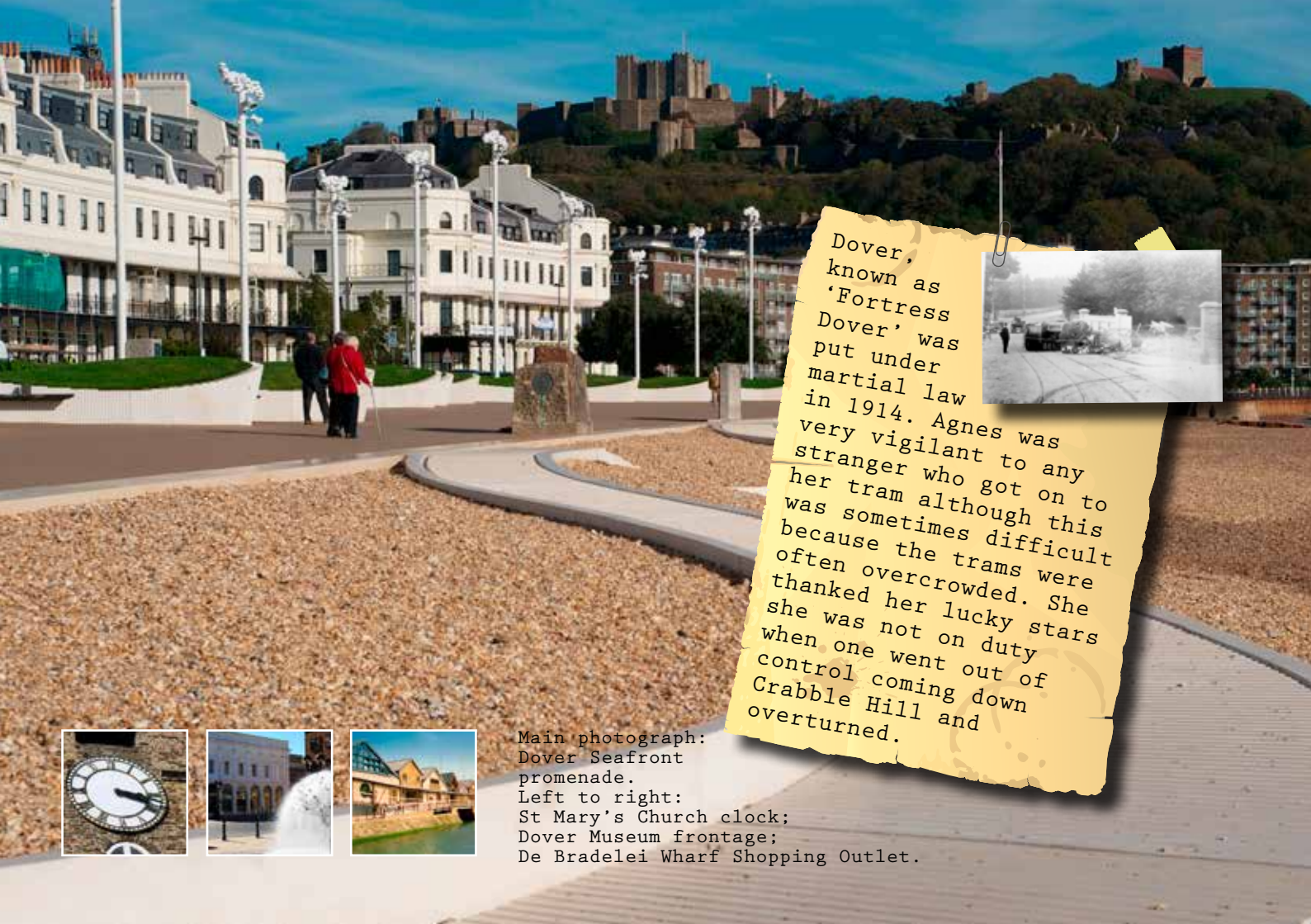
Day One

Immerse yourself in history at Dover Castle and experience the royal court of Henry II or travel deep into the White Cliffs and visit the newly refurbished Wartime Tunnels. After a spot of lunch, take advantage of a free guided walk and explore one of our many walks and trails with a volunteer greeter. For the more adventurous, take to the water. Try water activities or see the sights of Dover from a boat. And at the end of your busy day, try one of our great places to eat and relax, with a great range of locally sourced produce, you won't be disappointed.

Day Two

Soak up some café culture and shopping in Deal. The colourful seafront plays host to a wide choice of excellent pubs and restaurants. Wander through the High Street and explore fantastic small, independent shops and delicatessens, which rival The Brighton Lanes! Head along to Sandwich and discover one of the most intact, historic medieval towns in the country. Take a tour of the 16th century Guildhall or follow the town trail, much of it runs alongside the River Stour. From here you can take the River Bus and see the seals or a short walk from the town centre are the beautiful Secret Gardens. Haven't found time to fit it all in...?

...then stay a little longer!



Dover, known as 'Fortress Dover' was put under martial law in 1914. Agnes was very vigilant to any stranger who got on to her tram although this was sometimes difficult because the trams were often overcrowded. She thanked her lucky stars she was not on duty when one went out of control coming down Crabble Hill and overturned.



Main photograph: Dover Seafront promenade.
 Left to right: St Mary's Church clock; Dover Museum frontage; De Bradelei Wharf Shopping Outlet.

DOVER...

In Dover town you will find many unusual and hidden gems to explore.

Dover town nestles under the shadow of its magnificent castle. The busy port boasts some wonderful churches - the remains of St James', preserved as a ruin after shelling during the Second World War, is one of three Dover churches mentioned in the Domesday book and the Parish Church of St. Marys, located in the town centre, has been witnessing the Christian faith for over 900 years.

Dover Museum and the Bronze Age Boat Gallery, sits behind the old Market Hall facade and is spread over three floors, telling the story of Dover from Roman times to the present. Just up from Market Square is the Roman Painted House - a fine example of a Roman house

in Britain. If you need a break from history and fancy a bit of shopping there is only one place to visit. After the devastation suffered in the war, the entire Harbour and seafront area was completely rebuilt but now some of the surviving warehouses have been transformed into a fantastic designer shopping outlet - De Bradelei Wharf. It's right beside the yacht marina and close to the seafront and you will find plenty of easy parking.

Once all the sight-seeing has built up your appetite, you could try one of the many restaurants, cafés and pubs in the town. Then walk it all off with a stroll along the newly refurbished seafront promenade. Here you can take in a panorama of the channel and see across to the coast of France - maybe tempting you on a day-trip on one of the regular ferries sailing to Calais. Don't forget your passport!



Royal Marines, many based at Deal, led the Zeebrugge Raid. This was an attempt by the British Royal Navy to block the Belgian port of Bruges-Zeebrugge by sinking older British ships in the canal entrance, to prevent German submarines from leaving port.



Photographs: Deal Pier
Left to right: Deal Pier Cafe; Middle Street;
traditional phone box; painting by local Deal
artist Clive Metcalfe

DEAL...

Walk to the modern award-winning restaurant at the end of Deal's 1000ft long pier and look back at a view that has hardly changed in over a century.

Deal's unspoilt seafront is a wonderful collection of colourful buildings that stand out in a unique vista of jumbled and traditional roof lines - modern box-like symmetry is for other seaside towns! Once there was a row of rickety houses between Beach Street and the sea but the Victorians demolished it to create this elegant promenade. Now whilst enjoying the many cafés and restaurants or just sitting on a beach side bench you can enjoy uninterrupted sea views.

A short stroll from the seafront you will find more examples of Deal's heritage in the churches, houses and pubs crowding the narrow lanes around historic Middle Street. You're not the first to enjoy the charm of this town though - Lord Horatio Nelson himself was a regular visitor to Deal, coming ashore from his ship moored in the Downs to entertain his friends, Sir William and Lady Emma Hamilton, at the Royal Hotel, where you can still dine and stay. Why not also indulge yourself at a wonderful tea shop specialising in hand-made chocolates or visit an artisan bakery just a few steps from a delicatessen in the High Street, along with independent wine merchants, quaint gift shops, art galleries and antique emporiums, all here in Deal.

A secret "Q" port on the River Stour, near the sleepy town of Sandwich, was the starting point of a hidden ferry service for equipment and munitions to France and Flanders. Camps on the fields below Richborough were occupied by thousands of soldiers who serviced the workshops and train ferries constructing and shipping material to the Western Front.



Photographs: Sandwich Quay
 Left to right: Medieval detail;
 old market; Tom Paine's Cottage
 plaque; Red Cow pub sign

SANDWICH...

There is a wealth of unspoilt medieval buildings and interesting areas that make you feel you have stepped back in time in this special town.

Sandwich was once a bustling and prosperous port, some say the greatest in England, but as the years passed the river silted up and the shipping trade dropped away. As a result there was little development - buildings stayed as they had looked for hundreds of years with very few changes made to their traditional timbered frontages. Now it is said to be "one of the most well preserved medieval towns in Britain".

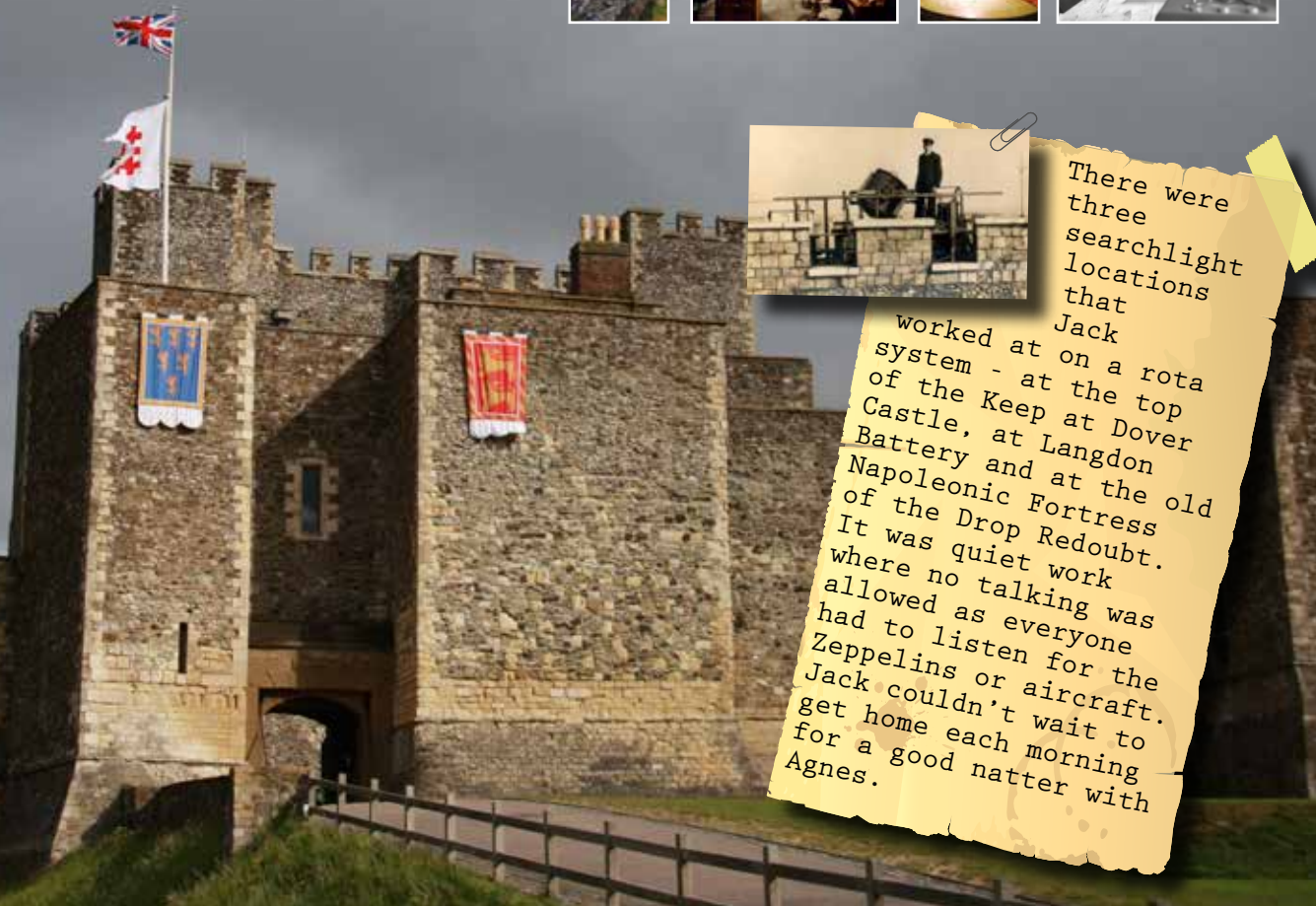
Built in 1579, the Guildhall dominates the Market Square that was first a corn market and then a cattle market and still has weekly produce and monthly farmers markets held there. It is well worth a wander down the Quayside to Fisher Gate - dating from

1384 and one of the two surviving original medieval town gates - the other is the Barbican which later served as a toll gate for the bridge. Throughout the town are some fascinating houses that reflect the important architectural influence that came from Flemish refugees in the 16th century - they also brought the idea of market gardening to England.

Food has always been associated with the town - in the 18th century the Earl of Sandwich is reputed to have devised the popular snack and its memory is revived with a number of food festivals and fairs that take place annually. Good eating is also on the menu at the many pubs, restaurants and cafés found in the winding lanes of the town.

From Sandwich Quay nature lovers can combine a leisurely boat ride with a chance to see an abundance of birds and seals as well as the remains of the secret "Q" port.

Photographs: Main photo: Dover Castle
Left to right: Richborough Fort;
Dover Castle Wartime Tunnels.



There were three searchlight locations that Jack worked at on a rota system - at the top of the Keep at Dover Castle, at Langdon Battery and at the old Napoleonic Fortress of the Drop Redoubt. It was quiet work where no talking was allowed as everyone had to listen for the Zeppelins or aircraft. Jack couldn't wait to get home each morning for a good natter with Agnes.

Roman Invasion..

When the first Roman Invasion of England occurred, in 55 BC, Julius Caesar is reputed to have landed on the shingle beaches near Walmer looking to conquer new territory - though it wasn't until AD43 that the full invasion began. The most impressive legacy of their ongoing occupation is the huge fortified remains at Richborough Fort near Sandwich - built on the site where the invaders arrived. This area of raised ground was originally on the shoreline giving good visibility across the sea and, once fortified, became the landing place for Roman fleets and the entry point to the Roman Empire in Britain. It was also the starting point for the famous Watling Street that went directly to London.

Dover Castle

Britain's spirit of resistance to unwanted invasion over the years is best symbolised by the magnificent Dover Castle. Built in the 1180s by King Henry II, it is located on top of the famous White Cliffs and overlooks the Channel, with views across to the French coast. You can also see an Anglo Saxon Church and Roman Lighthouse on the site - keep your eyes peeled as you explore the fascinating Secret Wartime Tunnels located in the cliffs - rumours of a wandering soldier's ghost are not to be ignored! Down in these tunnels you will find a dramatic recreation of the Dunkirk Evacuation, complete with spectacular projections of swooping Spitfires and original film footage. Above ground in the Great Tower you can go further back in history and re-live the splendour of the royal court of King Henry II.

Western Heights...

These massive military fortifications known as the Western Heights housed thousands of troops at the time of the Napoleonic Wars. Given commanding views over the town and Western Docks the soldiers' role was to guard the vital harbour and coast line. However following the road from their base to the port was over a mile, so to get them speedily from barracks to sea level they would use the Grand Shaft constructed between 1806-09. This unique triple spiral staircase is 140 feet (42 metres) in height and 26 feet (8 metres) in diameter. The three staircases of the Grand Shaft allowed the "Officers and their Ladies", the "Sergeants and their Wives" and the "Soldiers and their Women" to ascend and descend separately - how very proper!



Photographs left to right: Western Heights Re-enactment; Grand Shaft; View of Docks from Western Heights; Walmer Castle; Deal Castle.

Cinque Ports...

The Confederation of Cinque Ports was formed c.1050 in the time of Edward the Confessor when Hastings, Romney, Hythe, Dover and Sandwich assumed responsibility for 'ship service'. This was a special arrangement between these towns and the King whereby, in return for the provision of ships and men for 15 days free service a year to the Crown, the town's Portsmen received many privileges. These gave the Portsmen full self-government allowing them their own taxation and legal systems. They had their own courts, could judge and punish criminals, levy tolls and claim any wreckage found in the sea or on shore. In addition they controlled the yearly Yarmouth Herring Fair, a tradition which brought them into frequent conflict with the Portsmen of Norfolk. There is still a Lord Warden of the Cinque Ports today whose official residence is Walmer Castle.

World War Two and more...

Dover's unique position only 22 miles from the French coast pushed her into the front line during the Second World War. The town stood as a symbol of Britain's defiance in the face of enemy bombardment and quickly earned the title of "Hellfire Corner" as it bore the brunt of enemy shelling. From this dark period the White Cliffs of Dover came to symbolise the hopes for peace, as summed up in the famous wartime song "There'll be Bluebirds over the White Cliffs of Dover". The war also took its toll on those in the skies above the district and a memorial to commemorate the pilots involved during the Battle of Britain is on the cliff top at Capel-le-Ferne. A replica Spitfire and Hurricane stand nearby as a reminder of the iconic machines they flew to victory. The

efforts of those working in the fields during this period are remembered at the Women's Land Army Museum on Farthingloe Farm where you can also visit their café and bakery and let the children stroke the animals.

The ravages of war did not stop in 1945. On the grassy seafront at Deal stands the Memorial Bandstand - built in 1992 as a memorial to the eleven Royal Marine Bandsmen who tragically lost their lives as a result of the bombing of their barracks in 1989. Although now stationed elsewhere the Royal Marines return each year to perform here. In the summer months it also hosts a variety of musicians on Sundays - so a great place for a picnic and easy access for bathing.

Photographs left to right: Pill Box Coastal Defence; Battle of Britain Memorial; Women's Land Army Museum at Farthingloe; Deal Bandstand and the Royal Marines Band



One night there were so many bombs that Jack and Agnes took shelter in the nearest dug out. The dug out in Connaught Park, near Dover Castle was principally created to shelter the children playing there during the daytime, but these shelters were often used at night by the local residents.



Photographs: Pines Garden, St. Margarets.
Left to right: Kent's orchards are still famous for its apples and cherries;
Walmer Castle Gardens;
Secret Gardens of Sandwich

GARDEN OF ENGLAND...

In the 16th century King Henry VIII encouraged the development of many new orchards in Kent - including his favourite cherries that are still grown locally today. The fruit itself is delicious to eat and a visit to White Cliffs Country in spring when the apple and cherry blossom is out is a beautiful experience. Just as agriculture continued to be vital to Kent's economy and landscape, many formal and ornamental gardens were also being created by imaginative and enthusiastic landowners. In White Cliffs Country we are proud to have a wonderfully varied selection to offer to visitors. From the beautiful gardens at Walmer Castle, the result of the personal enthusiasm of the Lord Warden William Pitt, then later enjoyed by the Duke of Wellington when in residence, through to the exquisite Secret Gardens in Sandwich.

Discover the fascinating and sustainable Pines Garden. This organically managed 6 acre area has a lake, a sensory garden and sustainability trail for children, a grass labyrinth and organic kitchen gardens with over 40 different species of fruit and vegetables. And don't forget the wonderful tea room selling home made produce - much of it grown in the gardens.

In Sandwich you will find the Secret Gardens that are encircled by the old stone town walls - an oasis of serenity just waiting to be explored. The Salutation was designed by renowned English architect Sir Edwin Lutyens and surrounding it are the beautiful gardens, created by Gertrude Jekyll which have been restored and opened to the public.

Explore and Relax...

Don't think the district only has formal gardens where you can relax.

With great views over Dover you will find the town's Connaught Park which dates back to Victorian times. As well as the main gardens and ornamental pond the more active will find hard and soft tennis courts, a children's playground and a 5-a-side football pitch.

The public garden at Kearsney Abbey is a relaxing place for families to enjoy picnics, feed the birds and let the children play in the newly refurbished play area - but don't look for the abbey - there has never been one on the site!

Samphire Hoe is a truly amazing place. It was created from around 5 million cubic metres of chalk dug to make the Channel Tunnel - offering something for everyone with wild flowers, sea angling and walking.

Another new landscape can be found near Deal. Fowlmead Country Park, using land once occupied by our coal mining industry, it has now been reclaimed as a beautiful country park offering walks, mountain-biking and cycling trails, a lake and ponds plus activities such as archery, bushcraft and fossil-collecting - and it's free to enter.

If you are looking for unspoilt beauty where you can just escape and enjoy nature in its purest form, visit the National Trust's iconic White Cliffs. Here you can appreciate their beauty and enjoy their special appeal through the seasons by taking a dramatic clifftop walk offering unrivalled views of the busy English Channel and the French coast. Or search out the reserves at Whinless Down in Dover or Gazen Salts in Sandwich offering a variety of habitats and wildlife typical of the area.



Gareth Wiltshire

Photographs left to right:
Kearsney Abbey Gardens;
Samphire Hoe; Fowlmead Country
Park; White Cliffs.

Wildlife...

Wingham Wildlife Park has all the excitement kids (and adults!) could want - with tigers, crocodiles, meerkats and a massive variety of birds including penguins; a great café and toddlers play area complete the picture.

Nature lovers can combine a leisurely boat ride with a chance to see an abundance of bird and marine life with Seal spotting trips from Dover and Sandwich - you are almost guaranteed a great sighting of these fascinating creatures all year round.

White Cliffs Countryside Partnership have loads of countryside events for children and adults - see their website:
www.whitecliffscountryside.org.uk

Photographs left to right:
Tiger at Wingham Wildlife
Park; Egret on the River Stour
Estuary, Sandwich; Two views
of Goodnestone Park; Thomas
Paine Blue Plaque



Famous People...

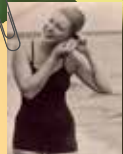
Many of the fascinating houses you can visit in the area also have associations with owners who are important figures in the worlds of Art, Literature and History.

The author Jane Austen was a regular visitor to Goodnestone Park when her brother lived on the Estate. Covering around 14 acres there are romantic woodland areas, an historic walled garden and spectacular pond and rockery. Immediately after staying here in 1796, Jane began writing her first novel, *Pride and Prejudice* - what inspiration will you get from a visit?

St Margarets, on the White Cliffs, has its own micro climate - maybe this is why famous figures such as Noel Coward and Ian Fleming chose to live here.

In New Street, Sandwich, you can see, or even stay in, the house where Thomas Paine, one of the Founding Fathers of the United States, lived in the 1790's.

As the RNVN was a naval operation Jack was required to go on swimming training and Dover Borough Council agreed a special rate of just 4d per head with Dover Swimming Baths. Jack and Agnes loved going there together whenever their days off coincided.



Photographs:
 Main photo: Tides Leisure Centre, Deal.
 Left to right: Golf links at Royal St George's;
 Walmer mosaic at Walmer Paddling Pool;
 Dover Sea Sports Centre;
 Fowlmead Country Park

GET ACTIVE...

In White Cliffs Country there's a lively range of things to do from swimming, tennis, cycling, walking, fishing, golf, sailing and even motor sport.

Our world-renowned golf courses boast a history of international competitions. In 1964 author Ian Fleming was nominated President-Elect of the Royal St George's which he thinly disguised as the Royal St Mark's when James Bond and his adversary Goldfinger had their famous contest. If you'd prefer a crazy round of golf take the kids (under 10's) to Walmer Paddling Pool for a splash and a putt. Swimming is great fun for the whole family and you can follow in the footsteps of Matthew Webb who, in 1875, started the long tradition of Channel Swimming and take a dip from one of the many beaches in the area. In chillier weather there are indoor pools

at Dover and Deal. Fancy being by or on the water rather than in it then we have fishing from Deal Pier and Samphire Hoe. For the more adventurous experience the areas marine heritage first hand and learn to sail, windsurf and get power-boating at the award-winning Dover Sea Sports Centre - which also has an excellent restaurant with great views of the harbour.

Back on dry land Fowlmead Country Park offers walks, mountain-biking and cycling trails - bike hire available on site. See the following pages for all the walking and cycling trails.

For those who are looking for a bit of adrenalin pumping motor racing Lydden Race Circuit is just outside Dover on the A2. There is something for everyone in White Cliffs Country!

WALKING...

Frontline Britain Trail

Follow this exciting circular walk and explore the wildlife and history surrounding the cliff top village of St Margarets-at-Cliffe.

Cliff Top Walks

Discover six Circular Walks ranging from 1 mile to 6 miles starting at either the National Trust Centre or the extensive fortifications at Western Heights. From the starting point at the National Trust Visitor Centre on Langdon Cliffs you can enjoy a 10 mile walk to the town of Deal.

Town and Village Walks

A lot of our villages have country walks - for instance the village of Goodnestone is the starting point of a fine walk through fields and woodland. Sandwich, Deal and Dover have Historic Town Trails with historic information panels along the way.

Samphire Hoe

Enjoy magnificent views along this coastal walk through the newest part of Kent, created from the spoil excavated during the construction of the Channel Tunnel.

Miner's Way

This circular trail, approximately 28 miles in length, explores picturesque countryside, linking together pretty villages, grand country estates and remains of this areas industrial and mining heritage.

Stour Valley Way

The Stour Valley Walk follows the River Stour, through the Low Weald and Kent Downs from its source at Lenham to the sea at Sandwich Bay.

Long Distance Walks

If you fancy a longer walk, then follow a National Trail. The North Downs Way and Saxon Shore Way are both long distance trails, which run through White Cliffs Country.

Guided Walks and Events

The coast and countryside in White Cliffs Country are world class for their wildlife and history and are world famous for being the Gateway to England.

The White Cliffs Countryside Partnership helps to preserve the environment and develop sustainable tourism. They organise many guided walks and special events throughout the year for families. Find out more about Green Gang events for children and guided cycling and walking dates.
www.whitecliffscountryside.org.uk



David Lewing

CYCLING...

Skylark Trail

Take the country road to the cliffs, from Walmer Station to Guston and Dover through open beautiful countryside.

Miner's Way

The Miner's Way cycle route parallels much of the walking trail, passing the sites of Snowdown, Betteshanger and Tilmanstone Collieries.

The Sandwich Way

Route 15 follows an imaginative route through beautiful rolling countryside, past ancient churches and villages.

Cathedral to Coast

The 'Coast to Cathedral' route is a spectacular 50 mile (80km), circular ride on Regional Routes 16 and 17 linking Dover, Folkestone and Canterbury.

Cliffs and Castle Route

The route from Sandwich to Dover follows part of National Route 1 passing three castles and stunning, unspoilt coastline.

Pick up leaflets and maps from the Visitor Information Centres or go to our website for links.



1910-1914 saw the working classes responding to the terrible conditions imposed on them by taking mass industrial action in what became known as the 'great unrest'. Jack's wages had been dramatically reduced so he was grateful for the additional money from the RNVr.



Photographs: Main photo: East Kent Railway, Shepherdswell. Left to Right: Sculpture 'Playday' at Snowdown Colliery, Aylesham; Statue of The Waiting Miner, Fowlmead



WORKING HERITAGE-Coal...

Fishing, farming, trade (legal and illegal), coal mining and tourism have all played a part in shaping the landscape and its people in this special corner of England.

Whilst the sea has always created employment in White Cliffs Country, from fishing and Cross-Channel trade to smuggling and tourism, the district had another major industry that lasted for nearly a century - coal mining. This was vital for the area, not only providing direct work within the three major pits at Tilmanstone, Betteshanger and Snowdown but also encouraging the development of the railway, with its associated engineering and supply services, as well as the construction of new pit villages at Aylesham, Elvington and Mill Hill.

At its height just after the Second World War, the industry employed around 5,000 people - many having re-settled from other parts of the United Kingdom. The Victorian diggings for a channel tunnel had first exposed coal in 1890 near the Shakespeare Cliff and this started a formidable local industry. By the time Tilmanstone closed in 1986 it had produced over 20,000,000 tons of coal - some from a depth of almost one kilometre under the Kent countryside. The final colliery, Betteshanger ceased production in 1989 and now the Fowlmead Country Park has been created on the site. The emotive "Statue of the Waiting Miner" standing at the entrance to the park serves as a lasting memory to the workforce that helped support the South's industry and railways throughout the 20th century.

WORKING HERITAGE - the Sea...

It's no surprise that trade on the water has been vital in a district edged by the sea and with the world's most active shipping channel. Long before the Royal Navy and car ferries or Spanish galleons and oil tankers worked their way through the passage between England and France, the earliest traders had started doing business. The highlight exhibit in Dover Museum is the oldest known sea-going vessel - The Bronze Age Boat. Discovered in 1992 just yards from where it is now exhibited, this stunning archaeological find is around 3,600 years old - that's as old as Stonehenge! It is now housed in an award winning gallery that you can visit along with many other superb artefacts from Dover's working heritage. The museum also hosts many free family days during the year - so make sure you give your young ones a chance to learn

something of their past in a really fun way.

In the 18th and 19th centuries Deal had no harbour but was still recorded as the third busiest port in England with shipbuilding yards and provision stores that supported Nelson's campaigns against Napoleon. The last remaining evidence of this naval era is the Time Ball Tower on the seafront. Now a Maritime Communications Museum it was originally built as part of a chain of semaphore stations in the fight against smuggling. Later it was used as a very accurate time piece - its ball dropping at precisely 1pm every day - for signalling Greenwich Mean Time to ships in the Channel, so helping mariners calculate their longitude positions.

Photographs left to right:
Tiling in the underpass where the Bronze Age Boat was discovered; Bronze Age Boat Gallery, Dover Museum; Time Ball Tower, Deal;



Lighthouse, Mills and Port...

At the end of the century radio telegraph pioneer Marconi set up a transmission mast at the South Foreland Lighthouse. From here the first ever ship-to-shore wireless messages and international wireless transmissions were sent. Dramatically, in 1899, the first telegraphed distress message was also sent by one of Marconi's colleagues working on the South Goodwin Lightship after it was rammed by a steamer - happily no lives were lost.

The River Dour flows through Dover to the sea. In Roman times this created a large estuary which has now silted up and been masked by the harbour, but the river has been used since Saxon times to power various watermills along its route. These included eight corn mills and five paper mills. Although a number of these buildings have been converted to residential use you can still get to see a fully working mill in the village of River. Crabble Mill uses the original

machinery for grinding, kids can try their hand at mini replica wheels and you can sample the produce in the tea-room that looks out over the millpond. Making flour has always been essential, and where a suitable river wasn't available to provide the power, wind did the job. You can see beautifully preserved windmills at Chillenden and Sandwich which offer a fantastic chance to get close to these iconic structures.

Today, Dover still depends on the harbour for much of its prosperity. It is the busiest Passenger Ferry Terminal in the world, the busiest Cruise Liner Terminal in Britain and a major port for freight, particularly for fruit and other perishables imported via the massive cargo ships.

But above all we rely on providing a warm reception for our most cherished industry - tourism...

Welcome to White Cliffs Country!



National Trust

David Lewing

Photographs left to right:
South Foreland Lighthouse; Crabble Corn Mill, River, Dover; working models at Sandwich White Mill; Dover harbour from the White Cliffs



Despite the early closure of public houses and theatres, there were regular concerts and dances in the Dover Town Hall and other venues around the town. One of Jack and Agnes' favourite performers was Lance Corporal William John Thomas (Billy) Beer of the Royal Engineers.



WHAT'S ON IN 2014

May

Sandwich Celebration
Two day food fayre in the heart of historic Sandwich Town with stalls focused on quality local products. Celebrate the sandwich with the famous "Sandwich Bites" sandwich making competition to find "the sandwich of Sandwich 2014".

Walmer Brocante

Antique and Collectables Fair on Walmer Green held on May Bank Holiday weekend.

March

Dover Film Festival

A unique film, recording the events and lives of the people of Dover, over the past year.

June

Le Weekend
Two day festival in Sandwich including an authentic Normandy Market, food stalls, music, classic cars and Can Can Dancing.

Western Heights

Open Weekend
View the Western Heights during one of the Open Weekends when the Drop Redoubt, one of the two forts on the Western Heights and the Grand Shaft will be open to visitors plus re-enactors will be on site to make the weekend come alive.





July

Dover's Armed Forces Day Weekend

Enjoy a free weekend, centred around a programme of bandstand entertainment along with historic military vehicles and displays, all set in the backdrop of Dover's magnificent castle.

Goodnestone Park Gardens

Beautiful gardens near Sandwich, with connections to Jane Austen. Enjoy lively music events and performances held in the gardens.

Deal Festival of Music and the Arts

International and national artists perform at venues in Dover, Deal and Sandwich at the annual popular two week festival showcasing everything from street music to opera and local art.

Sandwich Folk & Ale Festival

Annual festival with music and dancing in Sandwich pubs and streets. Range of folk musical styles with an outdoor stage on the Guildhall Forecourt.

Port of Dover Community Regatta

A fantastic festival of family fun on land and sea!

Deal Carnival and Regatta

Considered the South East's oldest and finest carnival and regatta. The packed programme includes live music, firework displays, a rowing regatta, culminating with a colourful carnival.



August

Sandwich Festival

Popular annual event with street stalls, Italian food market, street music and classic car meets.

Walmer

Picnic on the Green

Community picnic on Walmer Green with stalls

September

Deal Braderie

Open air antiques and memorabilia fayre held through the town.



December

Sandwich Christmas Community Fayre

Held on the Guildhall Forecourt Square in the heart of medieval Sandwich Town. Stalls selling hot food, mulled wine and Christmas gifts. Carol singing around the Christmas tree adds a truly seasonal feel to the day.

Deal Folk by the Sea

Weekend of music shanties and stories to celebrate Deal's maritime heritage held throughout the town.

November

Dover, Deal and Sandwich Christmas Lights

Christmas carnivals, parades and lights switched on across the district.

For more detailed information log onto the What's On page at: www.whitecliffscountry.org.uk

PLACES TO GO



- 1 Bamsole Vineyard
t: 01304 812530 m: 07770 482883
www.bamsole.co.uk
- 2 Battle of Britain Memorial
t: 01303 249292
www.battleofbritainmemorial.org
- 3 Coker Sea Fishing Charters
t: 01303 872329
www.royalcharlotte.co.uk
- 4 Connaught Park
t: 01304 832938 (to book Tennis Courts)
- 5 Crabble Corn Mill
t: 01304 823292
www.crabblecornmill.org.uk
- 6 Deal Castle
t: 01304 372762
www.english-heritage.org.uk/dealcastle
- 7 Deal Maritime & Local History Museum
t: 01304 381344
www.dealmuseum.co.uk
- 8 Deal Pier
t: 01304 363815
www.dealpier.com
- 9 De Bradelei Wharf
t: 01304 226616
www.debradelei.com

- 10 Dover Castle
t: 01304 211067
www.english-heritage.org.uk/dovercastle
- 11 Dover Leisure Centre
t: 01304 201145
www.yourleisure.uk.com
- 12 Dover Museum and Bronze Age Boat Gallery
t: 01304 201066
www.dovermuseum.co.uk
- 13 Dover Sea Safari
t: 07870 738 580
www.doverseasafari.co.uk
- 14 Dover Transport Museum
t: 01304 822409
www.dovertransportmuseum.org.uk
- 15 Dover White Cliffs Tours
t: 07971 301379 / 01303 271388
www.doverwhitecliffstours.com
- 16 East Kent Railway
t: 01304 832042
www.eastkentrailway.co.uk
- 17 Fire Fox Fishing Charters
t: 01580 891198
www.firefox-fishingcharters.co.uk
- 18 Fowlmead Country Park
t: 01304 615390
www.fowlmead.co.uk
- 19 Frontline Britain Trail
t: 01304 241806
www.whitecliffscountryside.org.uk

- 20 Gazen Salts Nature Reserve
t: 01304 617197
www.gazensaltsnaturereserve.co.uk
- 21 Goodnestone Park Gardens
t: 01304 840107
www.goodnestoneparkgardens.co.uk
- 22 Kearsney Abbey
t: 01304 824880
- 23 Kent Battle of Britain Museum
t: 01303 893140
www.kbom.org
- 24 Little Farthingloe Farm
01304 212040
- 25 Richborough Roman Fort and Amphitheatre
t: 01304 612013
www.english-heritage.org.uk/richborough
- 26 Roman Painted House
t: 01304 203279
cka.moon-demon.co.uk/painted.htm
- 27 Samphire Hoe
t: 01304 225649
www.samphirehoe.com
- 28 Sandwich Bay Bird Observatory & Field Centre
t: 01304 617341
www.sbbot.co.uk
- 29 Sandwich Guildhall Museum
t: 01304 617197
www.sandwichtowncouncil.gov.uk

- 30 Sandwich Guildhall Tours
t: 01304 617197
www.sandwichtowncouncil.gov.uk
- 31 Sandwich River Bus & Seal Spotting Trips
t: 07958 376183
www.sandwichriverbus.co.uk
- 32 South Foreland Lighthouse
t: 01304 852463
www.nationaltrust.org.uk/south-foreland-lighthouse/
- 33 St Peter's Church, Sandwich
www.stpeterschurch-sandwich.org.uk
- 34 The Pines Garden Tea Room & Museum
t: 01304 851737 (Garden) / 01304 853173 (Tea Room)
www.pinesgarden.co.uk
- 35 The Secret Gardens of Sandwich
t: 01304 619919
www.the-secretgardens.co.uk
- 36 The Women's Land Army Museum
t: 01304 212040
- 37 Tides Leisure & Indoor Tennis Centre
t: 01304 373399
www.yourleisure.uk.com
- 38 Timeball Tower Museum
t: 01304 360897
<http://dealtimeball.tripod.com>
- 39 Tours of the Realm
t: 01303 863869 / 07595 769615
www.toursoftherealm.com

40 Walmer Castle & Gardens
t: 01304 364288
www.english-heritage.org.uk/walmercastle

41 Walmer Paddling Pool
t: 01304 373399
www.yourleisure.uk.com

42 Western Heights – Local Nature Reserve
t: 01304 241806
www.whitecliffscountryside.org.uk

43 White Cliffs of Dover
t: 01304 202756
www.nationaltrust.org.uk/white-cliffs-dover

44 Whinless Down – Local Nature Reserve
t: 01304 241806
www.whitecliffscountryside.org.uk

45 White Mill Rural Heritage Centre
t: 01304 239544
www.whitemill.open-sandwich.co.uk

46 Wingham Wildlife Park
t: 01227 720836
www.inghamwildlifepark.co.uk

TOURS OF THE REALM



Private sightseeing tours of rural and historic Britain. Personalised itineraries, tailored to the interests of the client. Relaxed, fun and informative.

Tours of the Realm
PO Box 1023, Canterbury, Kent CT1 9GR
t: 01303 863869 / 07595 769615
e: enquiries@toursoftherealm.com
w: www.toursoftherealm.com

GOODNESTONE PARK GARDENS



Considered to be one of the best gardens in the South East. 14 acres including woodland area and walled garden. Fine trees, large collection of roses and herbaceous plants. Connections with Jane Austen who frequently visited.

Opening Hours and Admission

23 Feb – 13 Apr Sundays only 12noon–4pm
15 Apr – 26 Sept Tue-Fri 11am-5pm, Sun 12noon–5pm
Closed Saturdays and Mondays except Bank Holiday Mondays
Adults £6.00, Senior Citizen £5.50, Students £4.00, Children (6-16yrs) £2.00, Family £14.00, Groups 20+ £5.50

Goodnestone Park Gardens
Nr Wingham, Canterbury,
Kent, CT3 1PL
t: 01304 840107
e: enquiries@
goodnestoneparkgardens.co.uk
w: www.
goodnestoneparkgardens.co.uk

ST PETER'S CHURCH, SANDWICH



St Peter's, in the centre of Sandwich – England's most complete medieval town – has eleventh century origins, and is where Thomas Paine, who wrote The Rights of Man and coined the phrase The United States of America, was married in 1759. The church has a secret garden and a curfew bell that rings daily.

Opening Hours and Admission

Open daily from 10am to 4pm
Free entry

St Peter's Church Sandwich
Market Street
Sandwich
Kent CT13 9DA
w: www.stpeterschurch-
sandwich.org.uk

WALMER CASTLE & GARDENS



From Henry VIII's fort to residence of the Lords Warden, Walmer has been home to an incredible range of characters. See the original Wellington boots and stand where the Duke of Wellington died. Explore the magnificent gardens including the broad walk, kitchen garden, and contemporary Queen Mother's garden.

Opening Hours and Admission Prices 2014:

1 Apr-30 Sep, Daily*, 10am-6pm *Closed 11-13 July for Lords Warden
1 Oct-2 Nov, Daily, 10am-5pm

For winter opening dates, please refer to website
Members Free, Adults £7.90, Concessions £7.10, Child £4.70,
Family £20.50

Walmer Castle & Gardens
Kingsdown Road, Deal, Kent
CT14 7LJ
t: 01304 364288
e: customers@english-heritage.
org.uk
w: www.english-heritage.org.uk/
walmercastle

WHITE CLIFFS OF DOVER



There can be no doubt that The White Cliffs of Dover are one of this country's most spectacular natural features. They are an official icon of Britain and have been a symbol of hope and freedom for centuries. While here, enjoy exhilarating cliff top walks which offer unrivalled views of the busy English Channel. Learn more about their fascinating military history, savour the rare flora and fauna only found on this chalk grassland or just watch the ships passing in the channel from the comfort of our coffee shop.

White Cliffs of Dover
Langdon Cliffs, Upper Road, Dover, Kent, CT16 1HJ
t: 01304 202756
e: whitecliffs@nationaltrust.org.uk
w: www.nationaltrust.org.uk/white-cliffs-dover

Opening Hours and Admission

Visitor Centre open all year from 10.00am in spring and summer.
Car parking £3.50, free to National Trust members

SOUTH FORELAND LIGHTHOUSE



Accessible on foot from the White Cliffs Visitor Centre, South Foreland lighthouse was a life saving beacon for mariners guiding ships around the treacherous Goodwin Sands. Built in 1943 this striking Victorian landmark was the site of Faraday's work on electricity and the location for the first international wireless transmission by Marconi in 1898. Today you can take a guided tour of the lighthouse, learn all about its famous historical connections and enjoy spectacular cross Channel views or just relax in the quirky surroundings of Mrs Knott's Tearoom.

South Foreland Lighthouse
The Front, St Margaret's Bay, Dover, Kent
t: 01304 853281
e: southforeland@nationaltrust.org.uk
w: www.nationaltrust.org.uk/south-foreland-lighthouse

Opening Hours and Admission
Open from Monday 10th March - end of October on Fri-Mon inclusive and open every day in local school holidays.
Guided tour prices £5 per adult, £2.50 per child, £12.50 per family.

DOVER MUSEUM AND BRONZE AGE BOAT GALLERY



The district's largest and most varied museum, has a range of fascinating real objects, models and original pictures showing the history of Dover. Included in the admission charge is entry to the award winning Bronze Age Boat Gallery with interactive exhibits, computers and microscopes. Regular family days and events – ring for details.

Dover Museum
and Bronze Age Boat Gallery
Market Square, Dover, Kent, CT16 1PB
t: 01304 201066
w: www.dovermuseum.co.uk

Opening Hours and Admission
Open all year 10am-5pm Mon-Sat
Sundays Apr-Sept 10am-3pm.

There is a small admission charge - please see our website. for details

If you want to know more about Jack and Agnes's war why not drop into Dover Museum and they will guide you around the World War One Exhibition.



DOVER TRANSPORT MUSEUM



Dover Transport Museum is set in nearly two acres of attractive grounds, with ample free car and coach parking. The museum's two large galleries include over fifty road vehicles, many of them arranged in period street scenes, with shops and displays showing off the many exhibits and artefacts. From bicycles to buses, the vehicles include many which are unusual or unique. Working model railways, hundreds of models, and many displays which go beyond just transport, make for an enjoyable visit for everyone.

Dover Transport Museum
Willingdon Road, White Cliffs Business Park, Whitfield, Nr Dover, CT16 2JX
t: 01304 822409
e: info@dovertransportmuseum.org.uk
w: www.dovertransportmuseum.org.uk

Opening Hours and Admission
29 March to end October 2014: Saturdays, Sundays and Bank Holidays 10.30 – 5.00pm,
Wednesdays 1.30pm – 5.00pm.
November to Easter 2015: Sundays only 10.30am – 3.00pm.
Adults £5.00, Senior Citizens £4.00, Children £3.50, Family £15.00.

PLACES TO EAT

All Things Nice,
Sandwich
t: 01304 612596

The Mermaids Locker,
Sandwich
t: 01304 619311

**Walletts Court Country House
Hotel, Restaurant & Spa,**
St Margarets
t: 01304 852424
www.wallettscourthotel.com

**The Bay Restaurant at the
White Cliffs Hotel,**
St Margarets
t: 01304 852229
www.thewhitecliffs.com

**Dunkerley's Restaurant,
Bar & Bistro,**
Deal
t: 01304 375016
www.dunkerleys.co.uk

The Old Lantern Inn,
Martin, Near Dover
t: 01304 852276
www.theoldlanterninn.co.uk

Gardener's Kitchen Tea Rooms,
Alkham Valley Garden Centre
t: 01303 893351
www.alkhamvalleygardencentre.com

The Chequers Restaurant,
Golf Road, Deal
t: 01304 362288
www.chequersrestaurant.com

The Old Lantern Inn



16th century English Inn just 5 minutes drive from Dover in a picturesque village. Fresh home-cooked food and traditional ales served all week. A traditional atmosphere with a warm welcome. Extensive, lovingly tended gardens with a children's play area. Holiday accommodation also available.

Fishermans Wharf,
Sandwich
t: 01304 613636
www.fishermans-wharf.co.uk

The Plough Inn,
Ripple-by-Dover
t: 01304 360209
www.theploughripple.co.uk

Marine Court Table Table,
Dover
t: 01304 218260
www.tabletable.co.uk

The Railway Bell,
Dover
t: 01304 268227
www.therailwaybell.com

The Pines Garden Tea Room
St Margarets
t: 01304 853173
www.pinesgarden.co.uk

The Old Lantern Inn
The Street, Martin, Nr Dover,
Kent, CT15 5JL
T: 01304 852276
www.theoldlanterninn.co.uk

All Things Nice

Sue & Pete Caton
22A King Street, Sandwich, Kent, CT13 9BT
T: 01304 612596

Family run coffee shop having a selection of homemade cakes, scones, pastries, hot and cold snacks, soup. Pets welcome.

Gardener's Kitchen Tea Rooms

Alkham Valley Garden Centre, Alkham Valley Road, Alkham, Dover, CT15 7EV
T: 01303 893351 F: 01303 893356
E: rcox965198@aol.com
www.alkhamvalleygardencentre.com
All day food menu made in our own kitchen. Cream teas, afternoon teas, freshly ground coffee, cakes baked by us.

The Plough Inn

The Plough Inn, Church Lane, Ripple-by-Dover, Kent, CT14 8JH
T: 01304 360209 E: plough@sutton-vale.co.uk
www.theploughripple.co.uk

17th Century Village Inn – renown for its home cooking and traditional ales – with excellent en-suite accommodation. Free parking

The Chequers Restaurant



On the Ancient Highway beside Royal Cinque Ports golf course, Chequers serves South African specialities alongside modern English cuisine. Lunch and a la carte menus for all tastes and budgets. Check website for our popular cookery demonstrations and special events. Friendly, welcoming atmosphere. Walkers, cyclists, motorists and golfers all welcome!

The Chequers Restaurant
Stephanie Hayman
Golf Road, Deal, CT14 6RG
T: 01304 362288
info@chequersrestaurant.com
www.chequersrestaurant.com

Dunkerley's Restaurant, Bar & Bistro



Come and enjoy our warm hospitality in a friendly and relaxed atmosphere. Renowned for our fresh, local seafood we are dedicated to serving mouth-watering cuisine, enhanced by an extensive choice of fine wines, from classic French varieties to exciting discoveries from the new world.

Dunkerley's Restaurant, Bar & Bistro
19 Beach Street, Deal, Kent, CT14 7AH
T: 01304 375016
E: info@dunkerleys.co.uk
www.dunkerleys.co.uk

2 AA Rosettes

Fishermans Wharf



With its perfect waterfront location and its warm, friendly atmosphere, the Fisherman's Wharf is the perfect food venue in Sandwich, Kent whatever the occasion, whether it is just a snack at lunchtime, or a family celebration. Located on the quayside in the ancient Cinque port town of Sandwich our menu includes fresh seafood, fish & meat dishes at prices to suit all.

Fishermans Wharf
Chris Ash
The Quay, Sandwich, Kent, CT13 9RU
T: 01304 613636
E: Fishwharf36@aol.com
www.fishermans-wharf.co.uk

PLACES TO STAY

When you choose to stay in White Cliffs Country, you can be confident that it has been checked out before you arrive. All accommodation featured in this guide has been quality assessed by either Visit England or the AA or has recently applied for a rating and is awaiting assessment.

Ratings made easy

Accommodation in this guide is rated with stars. The star ratings are designed to meet expectations of consumers with regards to quality and facilities.

Hotels

Must have a minimum of five bedrooms, be licensed (unless categorised as a Metro Hotel) and all bedrooms must be ensuite or with private facilities.

Budget Hotels

Part of a large 'branded' Hotel Group offering clean and comfortable en-suite facilities, 24-hour reservations and a consistent level of facilities.

Guide to Awards

Gold and Silver Awards from Visit England are given in recognition of exceptional quality within a property's star rating or for outperforming a star rating. Yellow Stars from the AA are for providing Highly Commended accommodation.

Breakfast Awards

Visit England Breakfast awards are made for choice of breakfast, service and hospitality over and above their star rating.

The Green Tourism Business Scheme

Awarded to accommodation providers on their effort to reduce their environmental impact.

Guest Accommodation

Properties are likely to be smaller than hotels with perhaps a family home feel and approach and a less structured service.

Self Catering

The layout and design of the accommodation and the range and quality of the kitchen equipment is assessed as well as the quality and comfort of bedrooms and bathrooms.

Holiday Parks, Caravans and Camping

Star ratings reflect the overall quality of the park from one to five stars – five stars being reserved for parks of exceptional quality.

Ratings explained:

- * Simple and practical, no frills
- ** Well presented and well run
- *** Good level of quality and comfort
- **** Excellent service throughout
- ***** Exceptional with a degree of luxury

Booking information

Contact the accommodation
Book directly with the accommodation you've chosen, contact details are on each of the advertisements. Please mention that you found your accommodation in the White Cliffs Country guide when booking direct.

Online

Visit www.whitecliffscountry.org.uk and check out short break ideas and special offers.

Visitor Information Centres

Contact one of our Visitor Information Centres (see page 36) who, for a small fee, should be able to book accommodation for you. Alternatively you can call in when you arrive in White Cliffs Country. They can also Book a Bed Ahead for you.

Payments, Cancellation and Complaints

Making a booking is a legally binding contract and therefore cancellation procedures should be checked with each establishment before booking. Each establishment has a cancellation clause which will be strictly enforced if you do not give adequate notice.

Should you have cause for complaint, you should inform the manager or owner at the time of your stay, while they have the chance to put things right. You can also contact the relevant assessment agency: www.visitbritain.com or www.theAA.com

Establishments will generally accept credit card bookings by telephone and payment of a deposit may be requested. It is not normal to ask you to pay for the full amount of your stay in advance unless this is for an inclusive holiday. Some proprietors may charge a supplement to customers paying by credit card to cover their commission charges over those paying cash or cheque; they are obliged under the law to inform you if such a supplement is applicable.

Special Requirements

If you have any special requirements - dietary, accessibility or otherwise, please notify the proprietor when booking.

Accommodation Colour Guide

Hotels	Sandwich Accommodation
Dover Accommodation	Rural Accommodation
Deal Accommodation	Self-Catering Accommodation



Key to symbols

P Parking	F French spoken
Dogs accepted	N Dutch spoken
Children welcome	German spoken
Cots provided	Washing machine & drying facilities
Outdoor swimming pool	Linen hire service
Indoor swimming pool	Linen provided free of charge
Television in bedroom/unit	Dishwasher
Beverage tray in bedroom	Licenced club/bar on site
Major credit cards accepted	Food outlet
No smoking establishment	Microwave in each unit
No smoking rooms available	Refrigerator in each unit
Ground floor rooms available	Electric hook up
Café/restaurant	Night porter on duty
Fitness centre/gym	Showers
Alcohol licence	Gas/electricity by meter
Evening meal by arrangement	Shop on site
Golf (18 holes)	Maid service available
Lift	Mobility
Children's facilities/playroom	Level 1
Secure storage for cycles	Level 2
	Level 3

Dunkerley's Restaurant & Hotel - DEAL 2AA Rosettes ★★★ AA Hotel



Our award winning restaurant and accommodation in the heart of historic Deal, a stones throw away from the beach. We are in easy reach of Dover, Canterbury, Sandwich, Ramsgate and France. Renowned for fresh local seafood, passion and dedication dictate Dunkerleys culinary successes. There is an abundance of unique shops close by, in a beautifully lit seafront promenade, the perfect setting for a romantic evening. Looking for action? Championship golf courses or a spot of fishing are close too. Whatever your reason for staying at Dunkerleys you will enjoy thoughtful service and attention to detail in a charming location.

Ian Dunkerley
19 Beach Street, Deal, Kent, CT14 7AH
T: 01304 375016 F: 01304 380187
E: ddunkerley@btconnect.com
www.dunkerleys.co.uk
Rooms: 16. Single: From £80 - £110
Double/Twin: £50 - £60 per person
Principle Double/Twin: £65 - £75 per person

Ramada Hotel - DOVER



The 4 star Ramada Dover is set in 4 acres of gardens making it ideal venue for an overnight stay before going on a cruise or ferry to Europe. Facilities include restaurant, Costa Coffee lounge, bar, mini gym, two meeting rooms, Grand Marquee for weddings, Free Wi-Fi and car parking.

★★★★ AA Hotel

Singledge Lane, Whitfield, Dover, Kent, CT16 3EL
Contact: Reservations
T: 01304 821230 F: 01304 825576
E: reservations@ramadadover.co.uk
www.ramadadover.co.uk
Rooms: 68
Bed: From £24.50 per person on a twin share basis

The Lodge at Prince's - Sandwich



2 AA Rosettes ★★★ AA Hotel

An intimate venue in Sandwich Bay offering stunning views across the English Channel and White Cliffs of Ramsgate. The Lodge is a unique golfing and restaurant venue on the South East Coast. It has 38 bedrooms all with ensuite facilities. Our warm and friendly welcome will ensure that you feel relaxed throughout your stay. The Lodge offers a lift and accessible bedrooms, free wi-fi throughout and extensive free car parking. In the Lodge's 2 AA Rosette restaurant the Brasserie on the Bay menus are created to coincide with seasonal produce and wherever possible local Kentish providers are chosen.

Prince's Drive, Sandwich Bay, Kent, CT13 9QB
T: 01304 611118 F: 01304 410001
E: reservations@princesgolfclub.co.uk
www.princesgolfclub.co.uk

Rooms: 38
B&B: £60 - £120

County Hotel



The County Hotel is conveniently situated for easy access to the town centre and is a ideal stopover for guests travelling to Europe by ferry. We offer a heated indoor swimming pool, gym, free Wi-Fi. Our Christos Restaurant offers traditional home cooked meals. All rooms offer ensuite facilities. Parking available.

Reception
Townwall Street, Dover, Kent,
CT16 1SZ
T: 01304 509955 F: 01304 213230
E: res@county-hotel-dover.co.uk
www.county-hotel-dover.co.uk

Rooms: 80
Bed: £20.00 - £40.00
B&B: £26.00 - £52.00
Family room: P.O.A.

★★VE Hotel

BEST WESTERN PLUS Dover Marina Hotel & Spa - Dover



Located on the seafront, a few minutes walk from the town square, with the ferry and cruise terminals nearby, it is a great place for an overnight stay. Facilities include a restaurant, coffee shop, bar, three meeting rooms, gym, sauna and three spa treatment rooms. Free Wi-Fi internet available.

Waterloo Crescent, Dover, Kent, CT17 9BP
Contact: Reservations
T: 01304 203633 F: 01304 213826
E: reservations@dovermarinahotel.co.uk
www.dovermarinahotel.co.uk

Rooms: 81
Bed: From £29 per person on a twin share basis

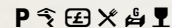
Wallett's Court Country House Hotel, Restaurant & Spa – Dover

2 AA Rosettes / Green Tourism Silver Award ★★★★★ VE ★★★★★ AA

Hotel



An historic country house hotel with an award winning restaurant and luxury health spa nestling in the heart of White Cliffs Country, 10 minutes drive from Dover. With stunning four-poster bedrooms in the old manor and contemporary rooms in converted Kentish barns set in acres of beautiful landscaped gardens.



Reservations
Dover Road, Westcliffe, St Margarets-at-Cliffe, Dover, Kent, CT15 6EW
T: 01304 852424 F: 01304 853430
E: mail@wallettcourt.com
www.wallettcourthotel.com
Rooms: 17
Bed: £60 - £115
B&B: £60 - £115
Family Room: From £170 per room

Heathers Woodlands

★★★★ VE Guest House

Beautiful location. Cosy basic and ensuite rooms. Scrumptious breakfast served early. Off road parking. Undercover garaging. Five minutes to port.

Heather & Barry Waller
Woodlands, 29 London Road, River, Dover, CT17 0SF
T: 01304 823635
E: heatherswoodlands@hotmail.co.uk
Rooms: 3. Bed: £25 - £30. B&B: £27 - £32



White Cliffs Hotel

AA Rosette / 2 AA Rosettes / Green Tourism Silver Award ★★★★★ VE ★★★★★ AA

Hotel



The stylish White Cliffs Hotel nestles in the heart of the picturesque village of St Margarets-at-Cliffe under a mile from the beautiful beach at St Margaret's Bay yet only ten minutes drive from Dover. At the hub of the recently restored historic inn is a light and contemporary bar and restaurant.



Reservations
High Street, St Margarets-at-Cliffe, Dover, Kent, CT15 6AT
T: 01304 852229 F: 01304 851880
E: mail@thewhitecliffs.com
www.thewhitecliffs.com
Rooms: 15
Bed: £44.50 - £59.50
B&B: £49.50 - £64.50
Family Room: From £129.00 - £159.00

Castle House

Guest House

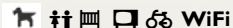
★★★★ VE ★★★★★ AA



Ideally located below Dover Castle, close to the town centre, seafront, ferries and Cruise Terminal. Sharon and Vaughan offer genuine

hospitality and an excellent breakfast available from 6.00am. The en-suite bedrooms are all individually and tastefully furnished. Off-street parking available on request. Wi-Fi available.

Mrs Sharon Matthews
10 Castle Hill Road, Dover, Kent, CT16 1QW
T: 01304 201656
E: info@castle-guesthouse.com
www.castle-guesthouse.co.uk
Rooms: 6.
Bed: £33.00 - £38.00. B&B: £35 - £75
Family: From £80.00



Bleriots

★★★ AA Highly Commended Guest Accommodation



Ideally located our 'AA 3 Gold Star Award' Victorian Residence within easy reach of Restaurants, Town Centre, Dover Castle, White Cliffs, Train Stations and Ferries. Channel Tunnel 9 miles. En-suite, Single, Double, Twin and Family rooms. Breakfast from 7.00am (Adult £6, Child £3). Security lit, walled and gated on site parking.



M Casey
47 Park Avenue, Dover,
Kent, CT16 1HE
T: 01304 211394
E: info@bleriotsguesthouse.co.uk
www.bleriotsguesthouse.co.uk

Rooms: 8
Bed: £26 - £30
B&B: £32 - £36
Family room: £70 - £78 (room only)

Maison Dieu

★★★★ AA Guest Accommodation



Perfect stopover or great for a short break! Affordable and delightfully presented Single, Double, Twin & Family Guest Rooms (sleep 3-5), AA 4 Star quality to ensure a comfortable stay. Free Wi-Fi and parking – just minutes from ferry, cruise, bus, train, shops and restaurants – and a great breakfast too!



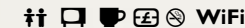
Barry & Diane French
89 Maison Dieu Road, Dover,
Kent, CT16 1RU
T: 01304 204033
F: 01304 242816
E: info@brgquest.co.uk
www.brgquest.co.uk
Rooms: 7
Bed: £24.50 - £35
B&B: £30 - £40
Family room: From £68 (room only)

St Martins Guest House

★★★ AA Guest Accommodation



Situated on A258 Dover Castle route this internationally recommended non-smoking establishment offers en-suite rooms with tea/coffee making facilities, hair dryers & TV. Ports, cruise liner terminals and town centre minutes away. Channel Tunnel 10 mins drive. Ideal touting base to see Kent. Major credit cards accepted. Wi-Fi.



C Morris
17 Castle Hill Road,
Dover, Kent, CT16 1QW
T: 01304 205938
F: 01304 208229
E: res@stmartinsgh.co.uk
www.stmartinsgh.co.uk

Rooms: 6
Bed: £25.00 - £30.00
B&B: £30.00 - £35.00
Family room & Single room: P.O.A.

Amanda Guest House

★★★★ VE Guest House



This lovely Victorian house built by Sir William Crundall is situated in a quiet cul-de-sac below Dover Castle. The en-suite rooms retain much of their original character. Close to Town Centre and five minutes from Port and Cruise Terminal. A non-smoking house. Free Wi-Fi.



Anne and Mike McFarrell
4 Harold Street, Dover,
Kent, CT16 1SF
T: 01304 201711
E: amandaguesthouse@hotmail.com
www.amandaguesthouse.com

Rooms: 3
Bed: £30.00 - £33.00
B&B: £32.50 - £35.00

Number One Guest House

★★★★ VE Guest House



A Grade II Georgian property located below Dover's historic castle. Close to town centre restaurants and amenities. Convenient for Port, Cruise Terminal and Channel Tunnel. Cosy en-suite rooms with TV. Breakfast served in your bedroom completes a snug atmosphere. Secure garage parking available and long term discounted parking can be arranged.

Margaret & John Reidy
1 Castle Street, Dover, Kent, CT16 1QH
T: 01304 202007
E: res@number1guesthouse.co.uk
www.number1guesthouse.co.uk
Rooms: 3. Bed: £27 - £30. B&B: £32 - £35
Family room: From £75 - £80



Visit our website
www.whitecliffscountry.org.uk
for further details

Longfield Guest House

★★★ VE Guest Accommodation



The Longfield is your one stop for quality accommodation and secure parking. Visit our website and book your rooms online instantly and securely. We have single, double, twin and family rooms. All our rooms are en-suite except our single rooms which are shared bathrooms. All our rooms have television, tea/coffee facilities and central heating. We are 2 minutes from Dover Priory Railway Station and Town Centre, 5 minutes from the Ferry Port and Cruise Terminal, 10 minutes from the Channel Tunnel. We serve English/Continental breakfast from 7am. Private security lit car park or garage (locked overnight) for cars, bikes or trailers.

George or Maria Vladimirov
203 Folkestone Road, Dover,
Kent, CT17 9SL
T: 01304 204716
E: res@longfieldguesthouse.co.uk
www.longfieldguesthouse.co.uk

Rooms: 7
Bed: £21.50 - £28
B&B: £23.50 - £30
Family room: From £67

P WiFi

Solley Farm House

★★★★★ VE Bed & Breakfast
VE Gold Award / VE Breakfast Award



In a peaceful conservation area overlooking the tranquil village pond, this charming 18th Century farmhouse with beamed ceilings and inglenook fireplaces is the perfect place to relax.

Sumptuous breakfasts and luxury touches at every turn - fruit, flowers, toiletries, bedside chocolates, soft towels and robes in the sumptuous ensuite bedrooms.

Sandy Hobbs
The Street, Worth, Nr Deal
Kent CT14 0DG
T: 01304 613701
E: solleyfarmhouse@tiscali.co.uk
www.solleyfarmhouse.co.uk

Rooms: 3
B&B: From £60 - £75

P WiFi

Hubert House Guest House

★★★★★ VE
VE Gold Award/VE Breakfast Award
★★★★★ AA Gold Star Award Guest House



Highly recommended. Hubert House is an award winning family run establishment. Perfectly located just below the White Cliffs and Dover Castle and moments from all major transport links, town centre and beachfront. This beautiful Georgian townhouse offers a touch of luxury, lots of comfort and excellent value.

Mr Peter & Luke Hanson
9 Castle Hill Road, Dover,
Kent, CT16 1QW
T: 01304 202253
F: 01304 210142
E: stay@huberthouse.co.uk
www.huberthouse.co.uk

Rooms: 6
Single room: From £45
Double room: From £60
Family rooms: AOR
Continental buffet breakfast included.
Other breakfasts are optional extra.

P WiFi

The Malvern

★★★★★ VE Guest House



Welcome to our home, 2 Victorian Houses made into one. Attractive rooms, all en-suite with 2 rooms with luxury Private bathrooms. All have flat screen TVs and DVD players, Radio Alarms, Trouser Presses, Mini/ Snack Bars, Tea & Coffee making facilities. Breakfasts are served from 7.00 to 10.00am. Ideally situated for town centre, castles, golf courses, ferries, Channel Tunnel and Canterbury.

Derek & Pauline Barnes
5-7 Ranelagh Road, Deal,
Kent, CT14 7BG
T: 01304 372944
E: reception@themalvernguesthouse.com
www.themalvernguesthouse.com

Rooms: 9
B&B: £40 - £45
Family Room: From £85

P

Lenox House

VE Silver Award ★★★★★ VE Bed & Breakfast



A large unusual house set in the heart of St Margaret's Bay above White Cliffs. Spacious attractive bedrooms with stunning views across the Bay. Ideally situated for ferries or Channel Tunnel. Superb cliff walks over National Trust land on the doorstep, or the cathedral city of Canterbury. Garage facilities by arrangement. WiFi available.

P WiFi

Sheena Isaacson
27 Granville Road, St Margaret's Bay,
Dover, Kent, CT15 6DS
T: 01304 853253
E: sheena_lenox@hotmail.co.uk
www.lenoxhouse.co.uk

Rooms: 3
Bed: From £50
B&B: From £45
Family room: From £155 (for 4 people)

Rolls Court

★★★★★ VE Guest Accommodation



A quiet village location five miles from Dover ferries it's ideal for travellers to/from Europe. On national walking and cycling route. Perfect accommodation for short breaks with a large garden and swimming pool. Rooms are en-suite, spacious and comfortable. Renowned for breakfasts. Wi-Fi, Private Parking. Garage for cycles and motorcycles.

P WiFi

Mrs Jill Montgomery
Church Whitfield Road,
Dover, Kent, CT16 3HY
T: 01304 827487
E: enquiries@rollescourt.co.uk
www.rollescourt.co.uk

Rooms: 3
Bed: £35 - £45
B&B: £40 - £50
Family room: P.O.A.

Molland House VE Gold Award/VE Breakfast Award ★★★★★ VE Guest Accommodation



Award winning B&B. 5 star with gold award. 13th century Historic Manor House, luxury rooms with amazing en-suites, beautiful views, peace and quiet with plenty of free parking. Everyone welcome, children and the family pet. Evening meals available which are all homemade. Enjoy homemade scones on arrival for a complimentary cream tea.

P

Tracy Marchant
Molland Lane, Ash,
Canterbury, Kent, CT3 2JB
T: 01304 814210
F: 01304 800088
E: tracy@mollandhouse.co.uk
www.mollandhouse.co.uk

Rooms: 5
B&B: £45.00 - £60.00
Family room: From £150 - £170

Strathmore ★★★★★ **VE B&B**
VE Silver Award / VE Breakfast Award

Charming Edwardian Coach House with spacious luxury, Ground Floor Suite, courtyard and parking. Rural, peaceful location in an AONB.

Mrs Tina Irvine, 37 The Droveaway, St Margaret's Bay, Dover, Kent, CT15 6BZ
T: 01304 853631

E: tina@strathmorebedandbreakfast.co.uk
www.strathmorebedandbreakfast.co.uk
Rooms: 2. B&B: From £40 - £50



Fisherman's Cottage



Cosy terraced Fisherman's Cottage within conservation area. Overlooks the sea across Walmer Green. Three bedrooms, sleeps five. Sunny, sheltered paved small garden. Shops, pubs, buses nearby. Car parking in road outside cottage. Gas central heating, telephone for incoming calls. 15 minute walk by the sea to Deal centre.



★★ **VE Self-Catering**

Mrs Catherine Tsoukkas
162 Wimbledon Park Road,
London, SW18 5UG
T: 020 8874 2170
E: tsoukkast@aol.com
Number of units: 1
Open: All year
Max persons per unit: 5
Price per unit per week: Min £180 /
Max £410
Minimum nights stay: 7

Alkham Court Farmhouse ★★★★★ **VE**
VE Gold Award / VE Breakfast Award
National Excellence Winners 'Gold'
Best B&B Accommodation



Winners of England's 'Best Bed and Breakfast'. Four luxury bedrooms. Stunning views. Excellent farmhouse breakfast. Complimentary hot tub and sauna.

Wendy Burrows
Alkham Court, Meggett Lane, South Alkham, Nr Dover,
Kent, CT15 7DG T: 01303 892056

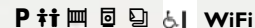
E: wendy.burrows@alkhamcourt.co.uk
www.alkhamcourt.co.uk
Rooms: 4. B&B: £65 - £85



Updown Park Farm, Nr Sandwich **VE Gold Award** ★★★★★ **VE Self-Catering**



Two cottages set in 30 acres of peaceful private parkland to walk and enjoy and yet within easy reach of Canterbury, Sandwich, Deal, Thanet's miles of sandy beaches, golf links, channel ports and tunnel. Both with three ensuite ground floor bedrooms and twin beds on upper. Wheelchair friendly. Relax, unwind!



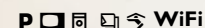
Mrs J R Montgomery
Little Brooksend Farm, Birchington,
Kent, CT17 0JW
T: 01843 841656
F: 01843 841656
E: info@montgomery-cottages.co.uk
www.montgomery-cottages.co.uk
Open: Mar-Dec and New Year
Number of units: 2
Price per unit per week: min £420/max £800
Max persons per unit: 6/7

Pilgrims Nook Holiday Cottage ★★★★★ **VE**
Self Catering

Family run luxury holiday cottages in the heart of rural Kent. Good connections to London, the Port of Dover, the city of Canterbury, the town of Deal and the Cinque Port of Sandwich. Includes indoor swimming pool facilities and landscape gardens.

Tim Phipps
Pilgrims Nook, Willow Woods, West Studdal, Dover, CT15 5BH
T: 01304 611235 E: timphipp@vfast.co.uk
www.pilgrimsnook.co.uk

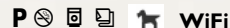
Number of units: 4
Open: All year
Max persons per unit: 8
Price per unit per week: Min £675 / Max £1,250



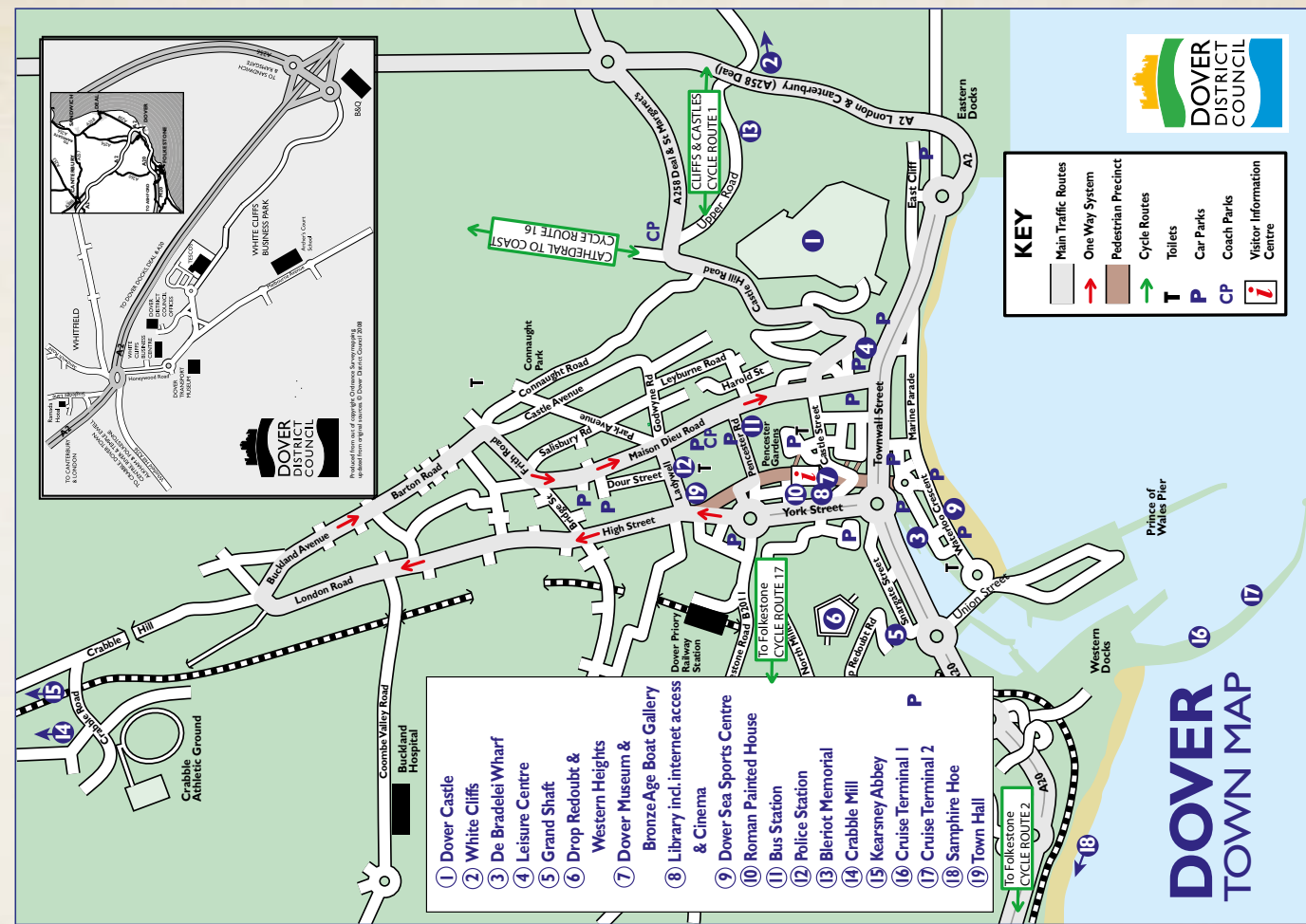
Freedom Holiday Homes **Agency** **Self-Catering**

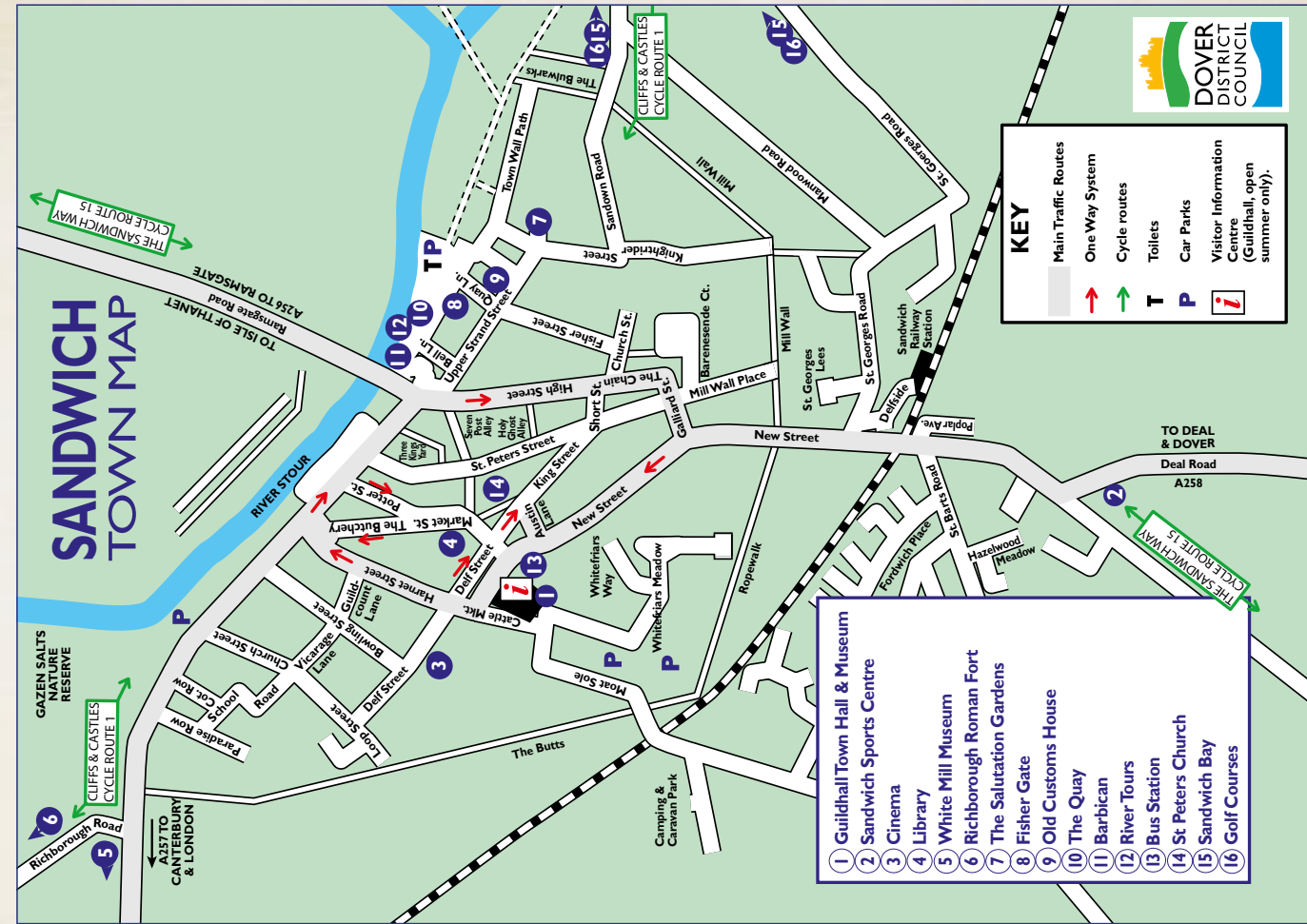
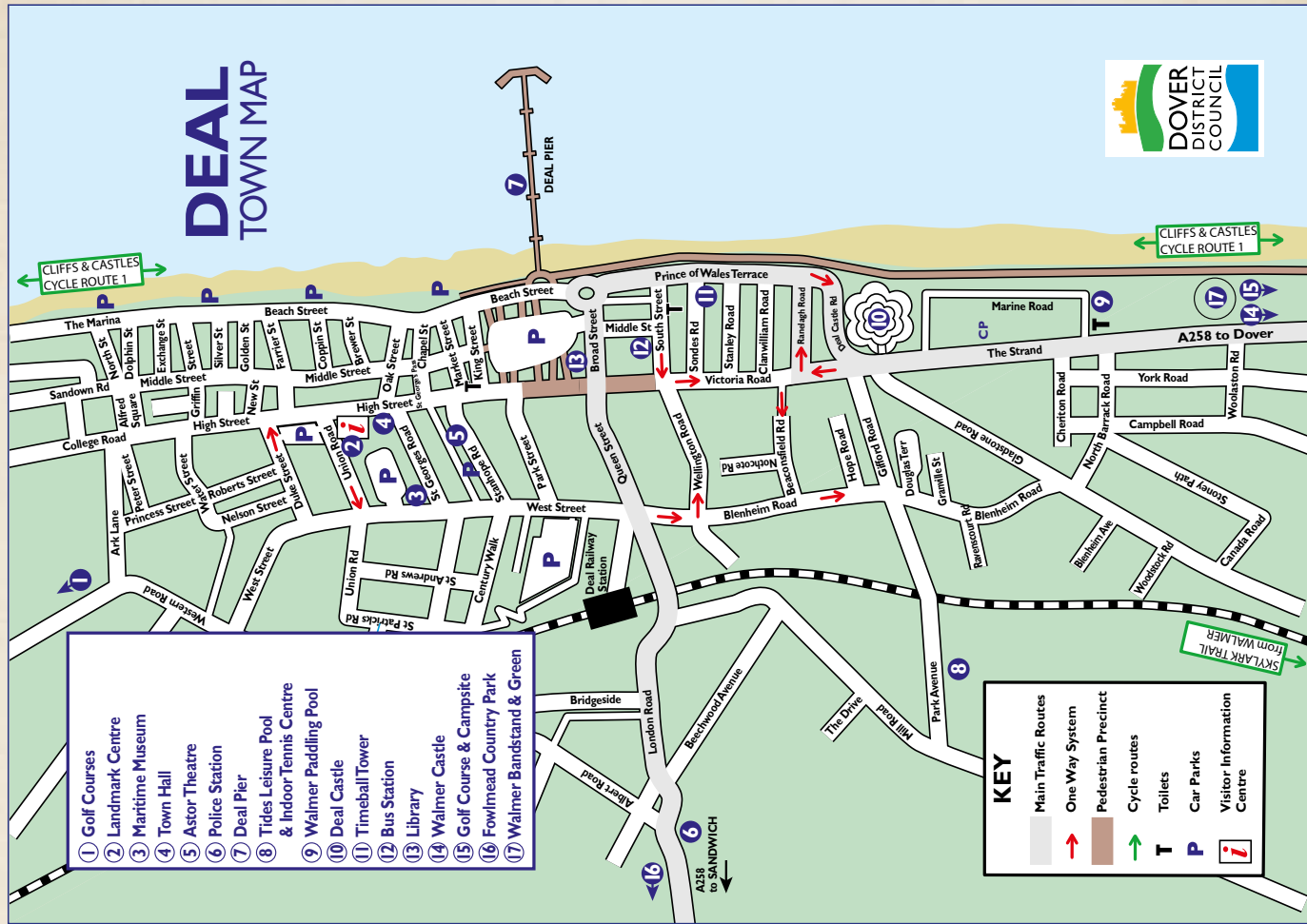


We are the leading provider of self-catering cottages in Kent & Sussex with a selection of nearly 250 individually selected letting properties. Established for over 20 years we are a family business with an excellent reputation for providing quality-assured accommodation. Book online or call our Reservations Team.



15 High Street, Cranbrook,
Kent TN17 3EB
T: 01580 720770
E: info@freedomholidayhomes.co.uk
www.freedomholidayhomes.co.uk





HOW TO GET HERE



Within easy access of London and the continent makes White Cliffs Country easy to reach and perfect for a short break. France is only 75 minutes on a Cross Channel ferry, the M20 and M2 roads link us to the city and the rest of the south east plus the new High Speed Rail Link make us only just over an hour from London on the train! Dover, Deal, Sandwich and our countryside are serviced by regular trains and buses both locally, as well as, to and from London.

By rail:

South Eastern operates services from London Charing Cross and London Victoria to Dover, Deal and Sandwich. Look out for their Group Save offer where 4 people travel for the price of 2 (terms and conditions apply).

National Rail Enquiries 08457 48 49 50

www.nationalrail.co.uk

Continental train connections can be made at Ebbsfleet and Ashford International.

Eurostar 08432 186186

By coach:

National Express operates a regular direct link from London to Dover and Deal.

For times, fares and information:

National Express 08717 818178

www.nationalexpress.co.uk

By local bus:

Detailed times of all local bus services are available from Stagecoach Buses. Stagecoach 0871 200 2233
www.stagecoachbus.com/east_kent

By bike:

There is an extensive network of cycle routes throughout White Cliffs Country.

For full details visit our website.

www.whitecliffscountry.org.uk

By car or motorbike:

Both the M20 and M2 connect directly to White Cliffs Country.

Cross Channel travel:

Ferry and train crossings between Dover to Calais and Dunkirk operate on a regular basis throughout the day.

P&O Ferries 08716 642121

Myferrylink 0844 2482100

DFDS Seaways 0871 574 7235

Eurotunnel 08443 353535



Visitor Information Centres

Making the most of your visit to White Cliffs Country

Dover Visitor Information Centre

T: 01304 201066

E: tic@doveryuk.com

W: www.whitecliffscountry.org.uk

Deal Visitor Information Centre

T: 01304 369576

E: info@deal.gov.uk

W: www.visitdeal.org

Sandwich Visitor Information Centre (Seasonal)

T: 01304 613565

E: tourism@sandwichtowncouncil.gov.uk

W: www.visitsandwich.org