

DOVER • DEAL • SANDWICH

# whitecliffscountry

# Days Out

CASTLES • TRAIN RIDES • MUSEUMS  
• GARDENS • FAMILY FUN • FESTIVALS  
• AWARD WINNING DESIGNER SHOPPING



[www.whitecliffscountry.org.uk](http://www.whitecliffscountry.org.uk)





# Enjoy a visit to the White Cliffs and our countryside...

Visit fairy tale castles and imposing fortresses by the sea; explore a Roman house or see a real bronze age boat in a high-tech gallery. For a different perspective, sail around the harbour or take a boat trip to see the seals or travel back in time on an historic railway. There's family fun to have at our parks, leisure centres, countryside and beaches.

So much to see and do.  
So many memories to take home.

## COUNTRYSIDE

### WHITE CLIFFS OF DOVER

Langdon Cliffs, Upper Road, Dover, Kent, CT16 1HJ t: 01304 202756  
e: [whitecliffs@nationaltrust.org.uk](mailto:whitecliffs@nationaltrust.org.uk)  
w: [www.nationaltrust.org.uk/white-cliffs-dover](http://www.nationaltrust.org.uk/white-cliffs-dover)

There can be no doubt that The White Cliffs of Dover are one of this country's most spectacular natural features. They are an official icon of Britain and have been a symbol of hope and freedom for centuries. While here, enjoy exhilarating cliff top walks which offer unrivalled views of the busy English Channel. Learn more about their fascinating military history, savour the rare flora and fauna only found on this chalk grassland or just watch the ships passing in the channel from the comfort of our coffee shop.



### CONNAUGHT PARK

Connaught Road, Dover.  
To book Tennis Courts call: 01304 832938  
These beautiful gardens offer a tranquil setting within Dover Town. Facilities include a children's play area, five grass tennis courts, two hard courts, mini football and toilet facilities.  
Open 24 hours a day

### KEARSNEY ABBEY

Alkham Valley Road, Temple Ewell, Dover t: 01304 824880  
Enjoy walking around the gardens or relax watching the wildlife on the lake. Tearooms, children's play area, BBQ area, plus grass tennis courts at Russell Gardens adjacent to Kearsney Abbey. Parking and toilet/disabled toilet facilities.  
Park Open 24 hours a day. Admission free.  
Tea Room: Sat & Sun all year. Weekdays seasonal.

### GAZEN SALTS NATURE RESERVE

off Strand Street, Sandwich, CT14 9HN  
e: [gazensalts@gmail.com](mailto:gazensalts@gmail.com) w: [www.gazensaltsnaturereserve.co.uk](http://www.gazensaltsnaturereserve.co.uk)  
1½ miles of winding paths escort you through this wonderful 15 acre manmade nature reserve. Enjoy waterways, woodland, grassland, variety of birds and wildflowers. Enjoyable visit for all. No dogs please. Open daily admission free

### FOWLMEAD COUNTRY PARK

Off Sandwich Road (A258), Sholden, Deal, CT14 0BF  
t: 01304 615390  
e: [info@fowlmead.co.uk](mailto:info@fowlmead.co.uk) w: [www.fowlmead.co.uk](http://www.fowlmead.co.uk)  
A 200 acre park with 2m tarmac cycling track, MTB trails, large free play park, café, plus paths for walking through established woodlands, wetlands and reed beds full of wildlife.

### SAMPHIRE HOE

Off the A20 carriageway between Dover and Folkestone  
t: 01304 225649  
w: [www.samphirehoe.com](http://www.samphirehoe.com)  
Samphire Hoe is an amazing place, made from the material dug to create the Channel tunnel. Refreshments are available on site. The site is accessible for all people, providing gentle and interesting walks. Open 7am-dusk every day.  
Pay and Display Car Park



### WHINLESS DOWN – local nature reserve

Elms Vale Recreation Ground, Dover  
t: 01304 241806 w: [www.whitecliffscountryside.org.uk](http://www.whitecliffscountryside.org.uk)  
This Local Nature Reserve is a gateway to the Area of Outstanding Natural Beauty. A good place to see the wildflowers and butterflies of ancient chalk grassland. Free leaflet available showing the walking routes.  
Open daily: Admission free

### WESTERN HEIGHTS – local nature reserve

South Military Road, Dover  
t: 01304 241806 w: [www.whitecliffscountryside.org.uk](http://www.whitecliffscountryside.org.uk)  
This Local Nature Reserve and Area of Outstanding Natural Beauty surround the extensive 18th & 19th century fortifications. Discover the history and wildlife of the site on three waymarked walking routes. Open all year. Admission free

### FRONTLINE BRITAIN TRAIL

St Margarets-at-Cliffe  
t: 01304 241806 w: [www.whitecliffscountryside.org.uk](http://www.whitecliffscountryside.org.uk)  
Discover the wildlife and history of the countryside of the cliff-top village of St Margarets-at-Cliffe on an exciting circular walk. A free leaflet is available about the trail with further information.  
Open all year. Admission free.

## GARDENS, VINEYARDS & ZOOS



### GOODNESTONE PARK GARDENS

Nr Wingham, Canterbury, Kent, CT3 1PL  
t: 01304 840107 e: [enquiries@goodnestoneparkgardens.co.uk](mailto:enquiries@goodnestoneparkgardens.co.uk)  
w: [www.goodnestoneparkgardens.co.uk](http://www.goodnestoneparkgardens.co.uk)  
Considered to be one of the best gardens in the South East. 14 acres including woodland area and walled garden. Fine trees, large collection of roses and herbaceous plants. Connections with Jane Austen who frequently visited. Admission fee applies.

### BARNSOLE VINEYARD

Fleming Road, Staple, Canterbury, Kent, CT3 1LG  
t: 01304 812530 m: 07770 482 883  
e: [vineyard@barnsole.co.uk](mailto:vineyard@barnsole.co.uk) w: [www.barnsole.co.uk](http://www.barnsole.co.uk)  
Our wines have achieved 'quality wine' status. We offer free mini tours and tasting and our wines are available for direct sale. Group tours welcome by prior arrangement.  
Admission free.

### THE SECRET GARDENS OF SANDWICH

The Salutation, Knightrider Street, Sandwich, CT13 9EW  
t: 01304 619919  
e: [info@the-secretgardens.co.uk](mailto:info@the-secretgardens.co.uk) w: [www.the-secretgardens.co.uk](http://www.the-secretgardens.co.uk)  
The beautiful Lutyens-designed Secret Gardens of Sandwich, with its infamous long borders and tree-lined avenues, feature artistic and inventive planting that provide visitors with an oasis of serenity and calm. Wander round Lake Patricia, visit the vegetable garden and enjoy homemade cream teas in our traditional Kentish tearooms. Open everyday.

### WINGHAM WILDLIFE PARK

Rusham Road, Wingham, Canterbury, Kent, CT3 1JL  
t: 01227 720836 e: [info@winghamwildlifepark.co.uk](mailto:info@winghamwildlifepark.co.uk)  
w: [www.winghamwildlifepark.co.uk](http://www.winghamwildlifepark.co.uk)  
With 200+ species we have more than any Kent Zoo, including Kent's only penguins! An indoor play area, picnic sites and restaurant make us Kent's top day out for families!



[www.whitecliffscountry.org.uk](http://www.whitecliffscountry.org.uk)

All the information was correct at time of going to print but please contact the venue directly for opening times and admission charges



# ...take a walk through history or a boat trip or just splash about and join in with the fun!



## BATTLE OF BRITAIN MEMORIAL

New Dover Road, Capel-le-Ferne, Folkestone, CT18 7JJ  
t: 01303 249292  
e: horay@hotmail.co.uk w: www.battleofbritainmemorial.org  
History was made in the skies above Kent when fewer than 3,000 Allied aircrew defeated the Luftwaffe in the Battle of Britain in 1940. They are remembered at the National Memorial to the Few at Capel-le-Ferne, between Dover and Folkestone, on an inspiring clifftop site. Alongside the central statue of a seated airman looking out over the Channel, the site features a replica Hurricane and Spitfire, a memorial wall listing the names of all those who flew in the Battle of Britain, a shop, café and toilets. Admission free.

## THE PINES GARDEN AND MUSEUM

Beach Road, St Margaret's Bay, Dover, CT15 6DZ  
t: 01304 851737  
e: enquiries@baytrust.org.uk w: www.pinesgarden.co.uk  
Organically grown Pines Garden situated behind the White Cliffs has six acres of many fine features including a cascade and adjoining lake, grass labyrinth and statue of Sir Winston Churchill. There is a Museum featuring local history including information on Noel Coward and Ian Fleming. Both former residents of St Margarets. There is also a Tea Room serving delicious wholesome light lunches, cream teas and hot and cold drinks.

## SANDWICH BAY BIRD OBSERVATORY & FIELD CENTRE

Guilford Road, Sandwich, Kent, CT13 9PF  
t: 01304 617341 e: sbbot@talk21.com w: www.sbbot.co.uk  
SBBOT is an independent conservation charity that works to maintain the local environment and to monitor the changes in bird, butterfly, dragonfly and all other species in the area. We have a modern field centre with accommodation.

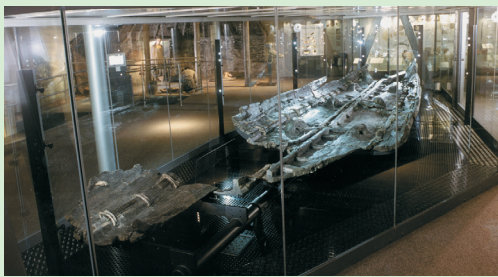
## MUSEUMS

### DEAL MARITIME AND LOCAL HISTORY MUSEUM

22 St George's Road, Deal, Kent, CT14 9JR  
t: 01304 381344  
e: info@dealmuseum.co.uk w: www.dealmuseum.co.uk  
Deal Maritime and Local History Museum contains the last remaining Deal oared gallery and a collection of historic model boats as well as other artefacts and documents illustrating Deal's history. Special exhibitions are put on every season and group visits can be arranged throughout the year.

### DOVER MUSEUM AND BRONZE AGE BOAT GALLERY

Market Square, Dover, Kent, CT16 1PB  
t: 01304 201066  
w: www.dovermuseum.co.uk twitter.com/dovermuseum  
The district's largest and most varied museum, has a range of fascinating real objects, models and original pictures showing the history of Dover. Included in the admission charge is entry to the award winning Bronze Age Boat Gallery with interactive exhibits, computers and microscopes. Regular family days and events – ring for details.



### DOVER TRANSPORT MUSEUM

Willingdon Road, White Cliffs Business Park, Whitfield, Nr Dover, CT16 2JX  
t: 01304 822409  
e: info@dovertransportmuseum.org.uk  
w: www.dovertransportmuseum.org.uk  
Dover Transport Museum is set in nearly two acres of attractive grounds, with ample free car and coach parking. The museums two large galleries include over fifty road vehicles, many of them arranged in period street scenes, with shops and displays showing off the many exhibits and artefacts. From bicycles to buses, the vehicles include many which are unusual or unique. Working model railways, hundreds of models, and many displays which go beyond just transport, make for an enjoyable visit for everyone.



### THE WOMEN'S LAND ARMY MUSEUM

Little Farthingloe Farm, Folkestone Road, Dover, CT15 7AA  
t: 01304 212040  
The Museum gives a fascinating insight into the life for women serving their country during the second world war. Free admission to patrons of the farm's retail outlets.

### SANDWICH GUILDHALL MUSEUM

Guildhall, Cattle Market, Sandwich, Kent, CT13 9AH  
t: 01304 617197 f: 01304 620170  
e: info@sandwichtowncouncil.gov.uk  
w: www.sandwichtowncouncil.gov.uk  
The museum tells the story of Sandwich from early medieval times. There are many illustrative panels relating to the town's history with artifacts dating back to the early 13th century.

### KENT BATTLE OF BRITAIN MUSEUM

Aerodrome Road, Hawkinge, Nr Folkestone, Kent, CT18 7AG  
t: 01303 893140 e: kentbattleofbritainmuseum@btinternet.com  
w: www.kbobm.org  
The most important collection of Battle of Britain artefacts on show in the country. Aircraft, vehicles, weapons and relics recovered from over 600 Battle of Britain aircraft. Free parking for cars and coaches.

## BOAT TRIPS AND FISHING

### SANDWICH RIVER BUS & SEAL SPOTTING TRIPS

The Quay, Sandwich, Kent, CT13 9EN  
t: 07958 376183 w: www.sandwichriverbus.co.uk  
Various cruises are available e.g. 2 hour cruise to see seals and birdlife in the estuary, 1 hour cruise to the Roman Fort (option to stopover), ½ hour mini cruise along Town Boundary.



### COKER SEA FISHING CHARTERS

Dover Marina, Nr Western Docks, Dover, Kent, CT17 9BN  
t: 01303 872329  
The 38ft Royal Charlotte and 36ft Portia, skippered by Mick and Matt Coker are large charter fishing vessels which operate from Dover Marina. Both boats operate 7 days a week, all year round, and are licensed and insured for 12 persons. We cater for groups and individuals, novices welcome and we can supply all rods, tackle and bait if required. Corporate days catered for. We specialise in cod and bass fishing, offshore wrecking and mid channel sandbanks. Fish gutted, cleaned, and bagged. On board toilet. 40 years experience.  
e: cokorseafishingcharters@hotmail.co.uk  
w: www.royalcharlotte.co.uk

### DOVER SEA SAFARI

Dover Sea Sports Centre, Esplanade, Dover, Kent, CT17 9FS  
t: 01304 212880  
e: info@doverseasafari.co.uk w: www.doverseasafari.co.uk  
A unique family coastal tour like no other in Dover. Step aboard our comfortable RIB speedboat, the Dover Explorer, for an exciting fun filled Sea Safari. Come see the Seals on a 2 hour Safari or travel the length of the spectacular White Cliffs of Dover up towards Deal Pier and back.

### FIRE FOX FISHING CHARTERS

Dover  
t: 01580 891198 e: info@mandtcharters.fsnet.co.uk  
w: www.firefox-fishingcharters.co.uk  
Fire Fox is a fully licensed charter boat based at Dover. Available for full or part day sea fishing trips – novices and children are welcome. Please call for further information or any specific requests.

### DEAL PIER

Beach Street, Deal, Kent, CT14 6HZ  
t: 01304 363815  
Built in 1954 the pier was the first seaside pleasure pier of any size to be built since 1910. Deal Pier continues to be a significant local landmark and public amenity. The pier has international recognition as an angling venue and has recently opened its new design award winning restaurant.



## CASTLES

### DEAL CASTLE

Victoria Road, Deal, Kent, CT14 7BA  
t: 01304 372762 www.english-heritage.org.uk/dealcastle  
Deal Castle is one of the finest Tudor artillery castles in England. Today you can explore the whole castle, from exciting dark passages to the first-floor captain's residence. A pleasant cycle path also links Deal and Walmer Castles along the beachfront.

### DOVER CASTLE

Dover, CT16 1HU  
t: 01304 211067 www.english-heritage.org.uk/dovercastle  
Discover 2,000 years of history at Dover Castle! Step inside the Great Tower and immerse yourself in the medieval world and royal court of King Henry II. Travel deep inside the White Cliffs and tour the Underground Hospital within the Secret Wartime Tunnels. Witness the daring evacuation of Dunkirk, vividly brought to life in our new visitor experience.



### WALMER CASTLE & GARDENS

Kingsdown Road, Walmer, Deal, Kent, CT14 7LJ  
t: 01304 364288 www.english-heritage.org.uk/walmercastle  
E-mail: customers@english-heritage.org.uk  
From Henry VIII's fort to residence of the Lords Warden, Walmer has been home to an incredible range of characters. See the original Wellington boots and stand where the Duke of Wellington died. Explore the magnificent gardens including the broad walk, kitchen garden, and contemporary Queen Mother's garden.



### RICHBOROUGH ROMAN FORT AND AMPHITHEATRE

Sandwich, Kent, CT13 9JW  
t: 01304 612013 www.english-heritage.org.uk/richborough  
The impressive ruins of the Roman Township at Richborough mark the point from which the Romans launched their successful invasion of Britain in 43 AD. Extensive remains of the walls and defensive ditches can be seen.

## LEISURE

### EAST KENT RAILWAY

Station Road, Shepherdswell, Dover, Kent, CT15 7PD  
t: 01304 832042  
e: media@eastkentrailway.co.uk w: www.eastkentrailway.co.uk  
Step back in time onto the largest remaining part of the Kent Coalfields. Enjoy four mile round trip on heritage trains, ride the miniature railway, visit the model railway carriage. Enjoy your lunch in a unique buffet carriage and take home a souvenir of a wonderful family day out.



### LITTLE FARTHINGLOE FARM

Folkestone Road, Dover, CT15 7AA  
t: 01304 212040  
Farthingloe is an historic site that was mentioned in the Domesday Book. The farm consists of both arable land and woodland. Shops and a tearoom/restaurant.

### DOVER LEISURE CENTRE

Townwall Street, Dover, CT16 1LN  
t: 01304 201145 w: www.yourleisure.uk.com  
Full range of exercise classes available together with a modern Fitness Suite, 2 swimming pools, squash courts and sports hall. Facilities open to members and non-members all the year round.

### TIDES LEISURE & INDOOR TENNIS CENTRE

Victoria Park, Park Avenue, Deal, CT14 9UU  
t: 01304 373399 w: www.yourleisure.uk.com  
Deal's indoor tropical lagoon. Leisure pool with waves and gusher, fun water features and giant slide. Jacuzzi and toddler pool. Fully equipped Health & Fitness suite, sports hall, Poolside café.



### WALMER PADDLING POOL

The Strand, Walmer, Nr Deal  
t: 01304 375029 w: www.yourleisure.uk.com  
This popular leisure facility is situated in the pleasant location of the seafront at Walmer. It comprises of a paddling pool for children 10 years and under, changing and toilet facilities, a refreshment kiosk, a putting green and bouncy castle, plus a crazy golf course on the beach.

## HISTORIC BUILDINGS

### SOUTH FORELAND LIGHTHOUSE

The Front, St Margaret's Bay, Dover, Kent  
t: 01304 853281 e: southforeland@nationaltrust.org.uk  
w: www.nationaltrust.org.uk/south-foreland-lighthouse/  
Accessible on foot from the White Cliffs Visitor Centre, South Foreland lighthouse was a life saving beacon for mariners guiding ships around the treacherous Goodwin Sands. Built in 1843 this striking Victorian landmark was the site of Faraday's work on electricity and the location for the first international wireless transmission by Marconi in 1898. Today you can take a guided tour of the lighthouse, learn all about its famous historical connections and enjoy spectacular cross Channel views or just relax in the quirky surroundings of Mrs Knott's Tearoom.



### SANDWICH GUILDHALL TOURS

Guildhall, Cattle Market, Sandwich, Kent, CT13 9AH  
t: 01304 617197 f: 01304 620170  
e: info@sandwichtowncouncil.gov.uk  
w: www.sandwichtowncouncil.gov.uk  
Built during the reign of Elizabeth I the Guildhall has been enlarged and modified in more recent times. Tours include visits to the ancient Court Room, Council Chamber and Mayor's Parlour.

### TIMEBALL TOWER MUSEUM

Victoria Parade, Deal, Kent, CT14 7BP  
t: 01304 360897 e: stephen.chappell@tiscali.co.uk  
w: http://Dealtimeball.tripod.com  
Video, static and interactive displays cover 3 centuries of involvement in signalling the fight against smuggling and as a vital link in safe navigation of distant oceans.

### WHITE MILL RURAL HERITAGE CENTRE

The Causeway, Ash Road, Sandwich, Kent, CT13 9JB  
t: 01304 239544 / 619268  
w: www.whitemill.open-sandwich.co.uk  
Restored Smock Mill built 1760. Original wooden machinery, millers cottage with domestic displays. Granary with farming tools, wheelwright, cobblers, plumbers workshops, saddlery horse harness, Victorian photographs, cow shed. Gift shop, toilets, car park, part disabled access.

### ROMAN PAINTED HOUSE

New Street, Dover, Kent, CT17 9AJ  
t: 01304 203279 w: www.theromanpaintedhouse.co.uk  
Finest surviving Roman period house. Unique painted walls (frescoes). Elaborate under floor heating (hypocaust). Displays on Roman Dover. Winner four national awards. Ideal for school and group visits. Garden area for picnics. Managed and staffed by volunteers.

### CRABBLE CORN MILL

Lower Rd, River, Dover, Kent, CT17 0UY  
t: 01304 823292  
e: info@crabblecornmill.org.uk w: www.crabblecornmill.org.uk  
Crabble Corn Mill was built in 1812 to supply flour to troops defending the Kent Coast from possible invasion from Napoleon's forces. Now run entirely by volunteers after restoration in 1986. The Mill can be seen demonstrating how flour is made traditionally by water power using French burr stones.

## CHURCHES



### ST PETER'S CHURCH

SANDWICH  
Market Street, Sandwich, Kent  
CT13 9DA  
w: www.stpeterschurch-sandwich.org.uk  
St Peter's, in the centre of Sandwich – England's most complete medieval town – has eleventh century origins, and is

where Thomas Paine, who wrote The Rights of Man and coined the phrase The United States of America, was married in 1759. The church has a secret garden and a curfew bell that rings daily.

## TOURS

### TOURS OF THE REALM

PO Box 1023, Canterbury, Kent CT1 9GR  
t: 01303 863869 / 07595 769615  
e: enquiries@toursoftherealm.com  
w: www.toursoftherealm.com

Private sightseeing tours of rural and historic Britain. Personalised itineraries, tailored to the interests of the client. Relaxed, fun and informative.



### DOVER WHITE CLIFFS TOURS

North Quay, Dover Marina, Western Docks, Dover, Kent, CT17 9BX  
t: 07971 301379 / 01303 271388  
e: info@doverwhitecliffstours.com  
w: www.doverwhitecliffstours.com  
Boat & Bus Tours starting from Dover Marina. Guided boat tour onboard "Southern Queen" to see the sights from the sea. "Dover Rover" Guided bus tour – 40-50 minutes tour of Dover Cliffs, Western Heights, through the town and Langdon Cliffs.

[www.whitecliffscountry.org.uk](http://www.whitecliffscountry.org.uk)

All the information was correct at time of going to print but please contact the venue directly for opening times and admission charges



# DOVER

With its wealth of history and heritage, Dover greets millions of visitors each year. Enjoy exhilarating cliff tops walks on the world famous White Cliffs of Dover, explore 2000 years of history at Dover Castle or discover the oldest known sea-going vessel, the Bronze Age Boat, exhibited in Dover Museum.

# DEAL

Visit the unique town of Deal, winner of The Telegraph's High Street of the Year 2013. Once a major port, Deal is steeped in maritime history. Take a walk through the old part of the town renowned for smuggling during the 18th century. Try the wonderful restaurants and pubs where you can enjoy fresh, locally caught fish.

# SANDWICH

Once a bustling and prosperous port, Sandwich is now said to be "one of the most well preserved medieval towns in Britain". Wander through the unspoilt medieval streets, where there are more half timbered houses than any other street in England or follow the historic town trail, much of it running alongside the River Stour.

# What's on

From regattas and colourful carnivals to music and folk festivals there's a wonderful array of events in Dover, Deal and Sandwich – find out more by visiting our What's On page at:  
**[www.whitecliffscountry.org.uk](http://www.whitecliffscountry.org.uk)**

**[www.whitecliffscountry.org.uk](http://www.whitecliffscountry.org.uk)**

# Shopping

## DE BRADELEI WHARF - DOVER

Cambridge Road, Dover, Kent, CT17 9BY t: 01304 226616 f: 01304 223616  
e: [theritage@debradelei.com](mailto:theritage@debradelei.com) w: [www.debradelei.com](http://www.debradelei.com)  
Superb store selling womenswear, menswear, shoes, outdoor wear, soft furnishings, books, kitchenware, gifts and Wedgwood china and glass. Superb maritime setting in the shadow of Dover Castle and the famous White Cliffs. Coaches and groups always welcome. Easy car parking. Ice cream bar and coffee shops serve delicious home cooked food.

## SANDWICH

In Britain's oldest medieval town you will find a wealth of independant quirky shops including delis, unique clothes shops as well as a wealth of cafes, restaurants and pubs.

## DEAL

This unqiues seaside town where the fishing boats are still pulled up onto the shingle beach offers a range of independant and national chain stores interspersed with antique and collectable shops and art galleries for that very special gift or memento from your visit.

# Walks and cycle routes

With stunning countryside White Cliffs Country has miles of walking and cycling trails to suit all ages and abilities. Whether an experienced walker or casual ramblar, explore miles of marked walking and themed trails. With a huge amount of cycle routes bring your own bike or hire one and take advantage of our quiet country lanes and coastal tracks and discover White Cliffs Country on two wheels!

**Put your boots on for walks:** Frontline Britain Trail, Cliff Top Walks, Town and Village Walks, Samphire Hoe, Miner's Way, Stour Valley Way, The North Downs Way, Saxon Shore Way, Guided Walks and Events.

**Get two wheels for:** Skylark Trail, Miner's Way, The Sandwich Way - Route 15, Cathedral to Coast - circular ride on Regional Routes 16 and 17, Cliffs and Castle Route - National Route 1.

**For further information pick up leaflets and maps from the Visitor Information Centres or visit our website [www.whitecliffscountry.org.uk](http://www.whitecliffscountry.org.uk).**

# Visitor Information Centres

## DOVER VISITOR INFORMATION CENTRE

T: 01304 201066  
E: [tic@doveruk.com](mailto:tic@doveruk.com)  
W: [www.whitecliffscountry.org.uk](http://www.whitecliffscountry.org.uk)

## DEAL VISITOR INFORMATION CENTRE

T: 01304 369576 E: [info@deal.gov.uk](mailto:info@deal.gov.uk) W: [www.visitdeal.org](http://www.visitdeal.org)

## SANDWICH VISITOR INFORMATION CENTRE (Seasonal)

T: 01304 613565  
E: [tourism@sandwichtowncouncil.gov.uk](mailto:tourism@sandwichtowncouncil.gov.uk) W: [www.visitsandwich.org](http://www.visitsandwich.org)

**[www.whitecliffscountry.org.uk](http://www.whitecliffscountry.org.uk)**

